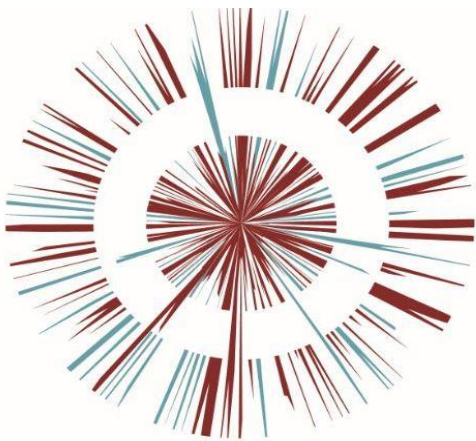




OMEGA ZONE 8, ST HELENS

Omega St Helens Ltd / T. J. Morris Limited



Document Title
ES Vol. 3 Figure 10.2 Landscape and
Visual Receptors
Document No. OPP DOC.11.38b







THIS DRAWING IS COPYRIGHT © OF BARTON HOWE ASSOCIATES LTD.
ALL DIMENSIONS TO BE CHECKED ON SITE PRIOR TO COMMENCEMENT OF ANY WORK. BARTON HOWE ASSOCIATES LTD ARE TO BE NOTIFIED OF ANY OMISSIONS OR ERRORS PRIOR TO COMMENCEMENT OF ANY WORKS OR ORDERING OF MATERIALS.

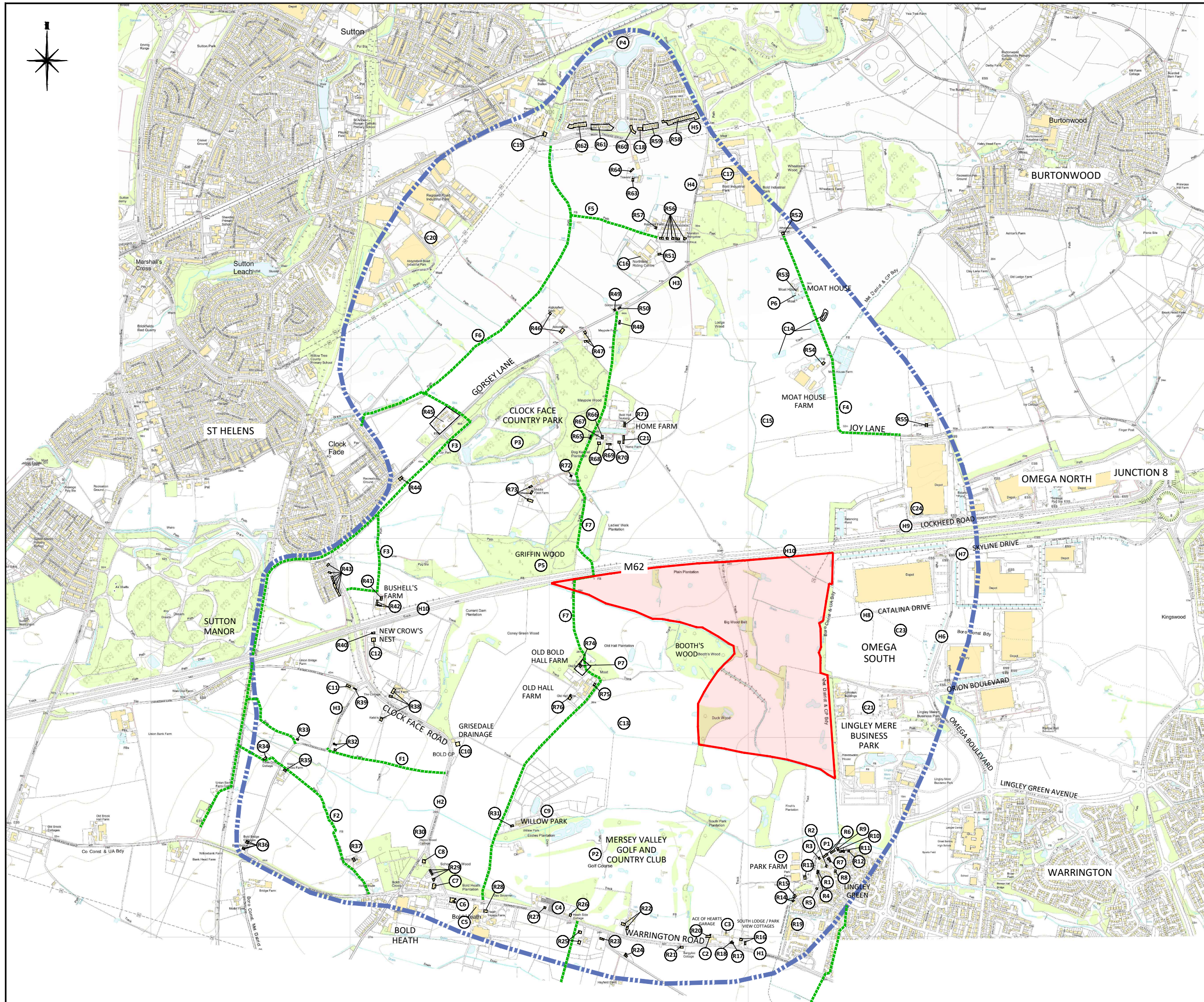
DO NOT SCALE FROM THIS DRAWING.
Figured dimensions only are to be used.

BARTON HOWE ASSOCIATES LTD CAN NOT BE HELD RESPONSIBLE FOR THE ACCURACY OF INFORMATION PRODUCED BY OTHERS FOR THE PURPOSES OF PRODUCING OUR DRAWINGS I.E. TOPOGRAPHICAL SURVEYS. AREA MEASUREMENTS ARE PROVIDED FOR INFORMATION ONLY. ANY VERIFICATION OF MEASUREMENTS SHOULD BE SOUGHT FROM A SUITABLY QUALIFIED SURVEYOR.

BARTON HOWE ASSOCIATES LTD CAN NOT BE HELD RESPONSIBLE FOR THE ACCURACY OF COMPUTER SOFTWARE USED TO DETERMINE MEASUREMENTS.

KEY

-  Proposed Development Site
-  Proposed Study Area
-  Receptor Reference Number
-  Public Rights of Way (PROW):
PROWs are not numbered. St Helens Council Rights of Way Definitive Map was unavailable at the time of the preparation of the Scoping Report.



Rev	Description	PM	Review	Date
Client				
OMEGA WARRINGTON LTD				
Project				
OMEGA: ZONE 8				
Title				
LANDSCAPE AND VISUAL RECEPTORS				
Created by		Reviewer	Date	
PAT		JMH	12/19	
Project No.				
19_1011_POE				
Size	Scale	Status		
A3	1:17,500@A3	DRAFT		
Drawing No.			Rev	
FIGURE 10.2				
bh barton•howe associates				
Landscape Design Assessment Management				
IT Centre, York Science Park, Innovation Way, Heslington, York, YO10 5NP				