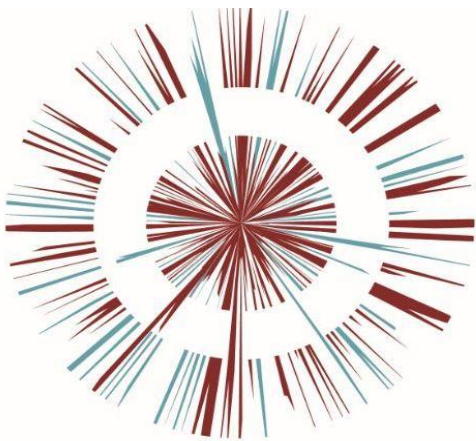




OMEGA ZONE 8, ST HELENS

Omega St Helens Ltd / T. J. Morris Limited









Document Title
ES Vol. 3 Figure 9.11 Bat Box
Locations – Unit 1 (TJM)
Document No. OPP DOC.11.37k

Figure 9.11
Bat Box Locations
– Unit 1 (TJM)

Omega Zone 8, St Helens

Legend

-  Development Boundary (indicative)
-  Unit 1 Boundary (indicative)
-  Bat Box – small colony (e.g. Schwegler 2FN)
-  Bat Box – large colony (e.g. Schwegler 1FF)
-  Bat Box – hibernation box (e.g. Schwegler 1FW)
-  No bat boxes fitted within 50m buffer zone from motorway

Bat boxes are best positioned at a height of between 3 to 6 metres in an open sunny position. A group of 3 boxes facing in different directions will provide a variety of micro-habitats. All boxes to be fitted within 'dark' areas (0 lux).

All boxes to be placed on northern side of the brook.
 An ecologist must be present to advise on specific locations.
 These positions may alter following advice of ecologist on site.

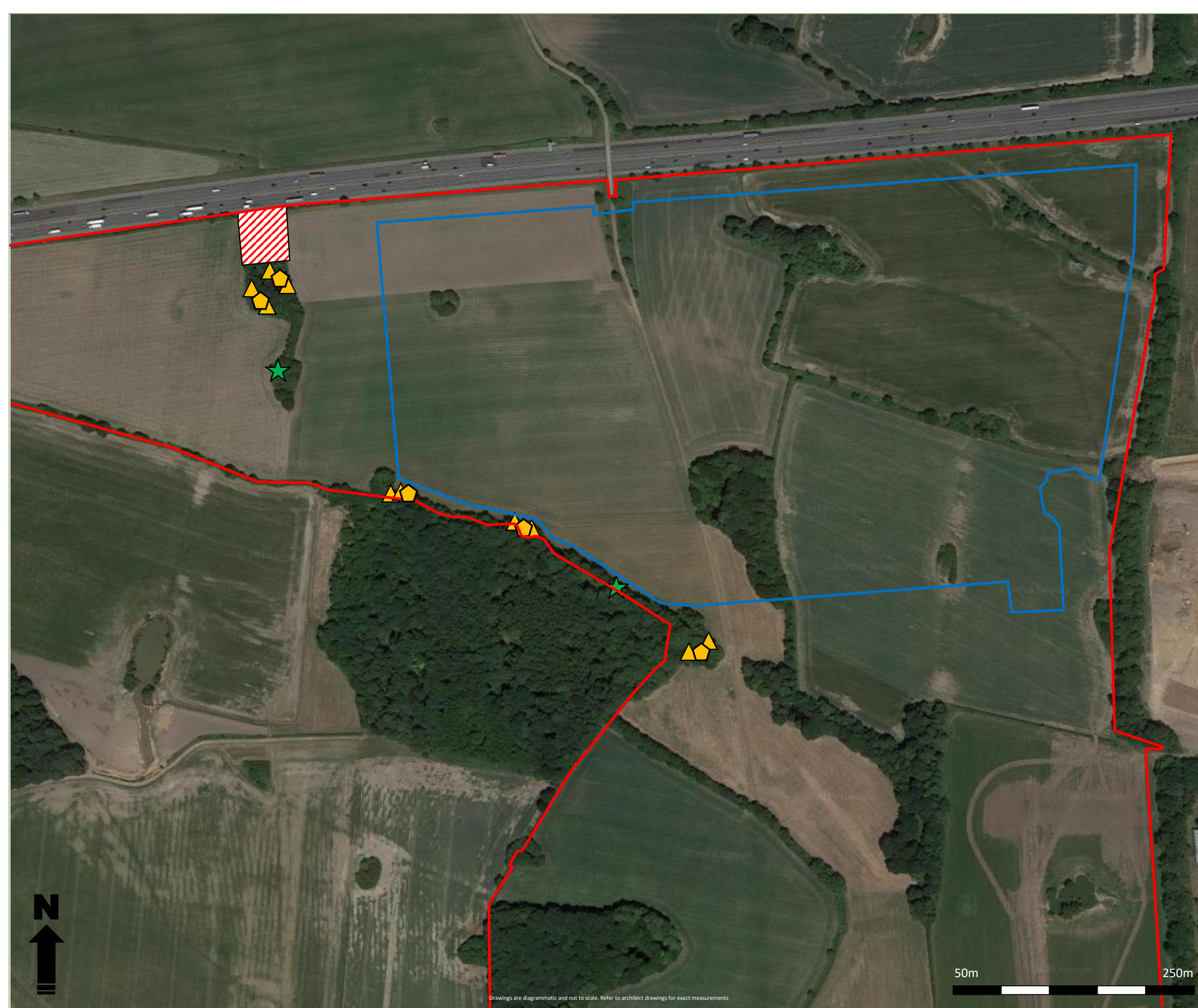


Drawing No.: 16903-11ES_C

Revision Dates			
A	B	C	D
11/12/19	16/12/19	18/12/19	

the **ecology Practice**

0845 602 3822
 www.ecologypractice.co.uk



Drawings are diagrammatic and not to scale. Refer to architect drawings for exact measurements