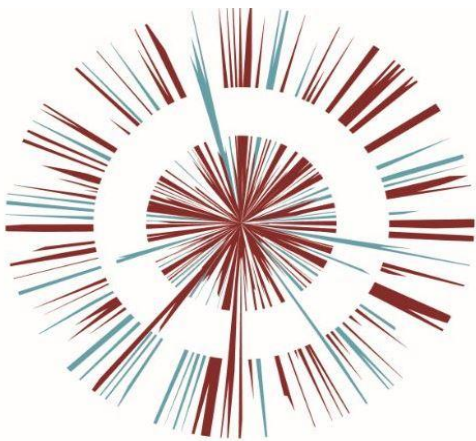




# OMEGA ZONE 8, ST HELENS

Omega St Helens Ltd / T. J. Morris Limited



Document Title  
ES Vol. 3 Figure 9.1 Survey Extent  
Document No. OPP DOC.11.37a

Figure 9.1

# Survey Extent

Omega Zone 8, St Helens

## Legend

- Development Boundary  
*(Bat activity, water vole and reptile surveys within site boundaries)*
- 250m from Application Boundary
- 500m from Application Boundary
- # Pond eDNA surveyed
- # Pond HSI only
- ⊘ No access for any survey
- # Pond Unsuitable
- Key Wintering Bird Habitat  
*(surveys include site-wide)*
- Ground Level Tree Assessment Extended 30m Beyond Site Boundaries.

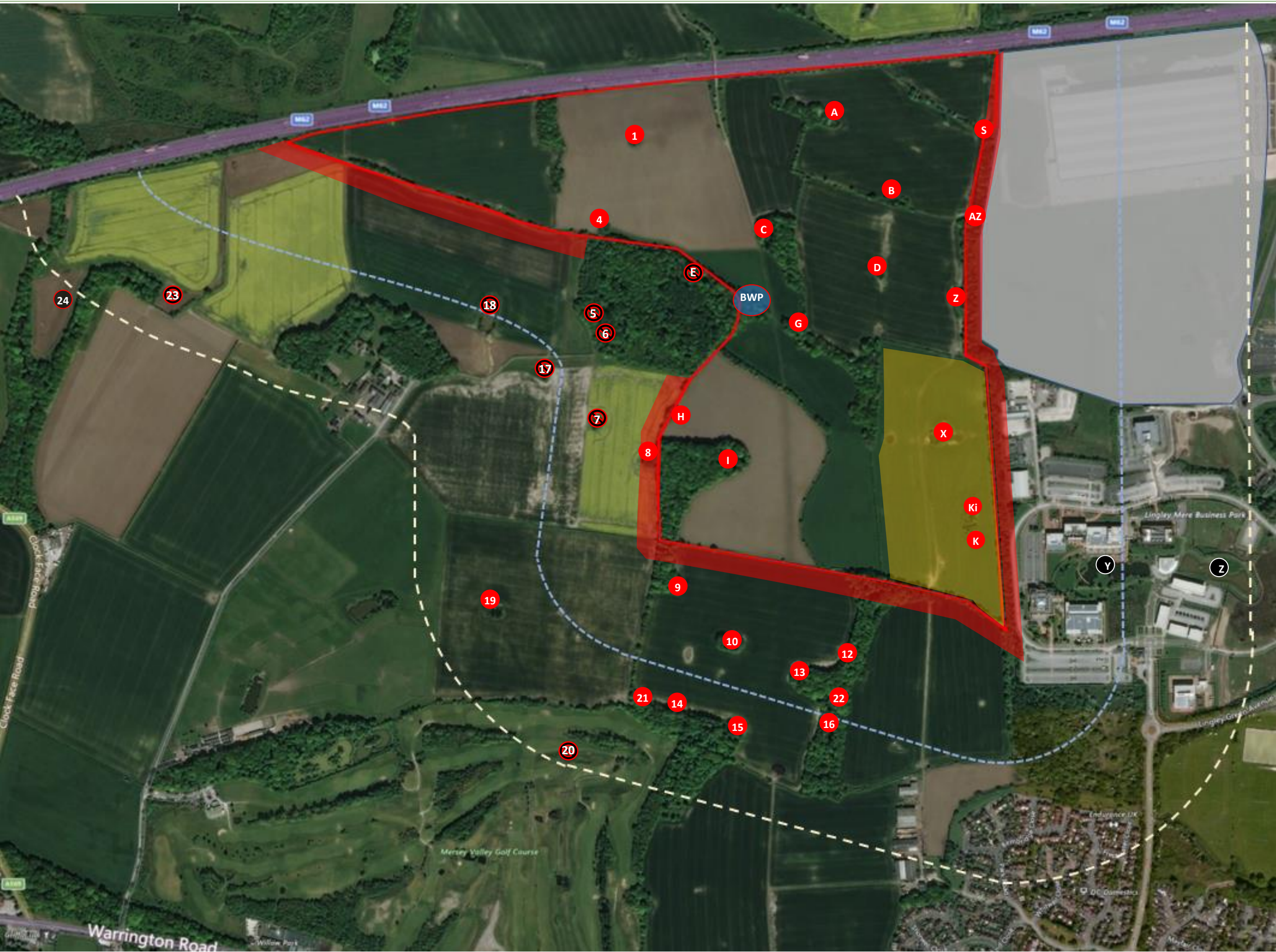


**Drawing No.: 16903-01ES\_B**

Revision Dates			
A	B	C	D
01/11/19	11/12/19		

the **ecology Practice**

0845 602 3822  
www.ecologypractice.co.uk



Drawings are diagrammatic and not to scale. Refer to architect drawings for exact measurements