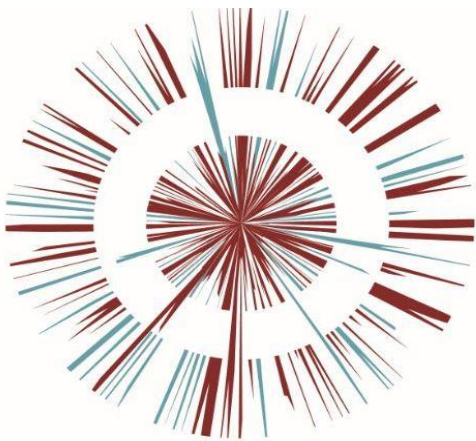


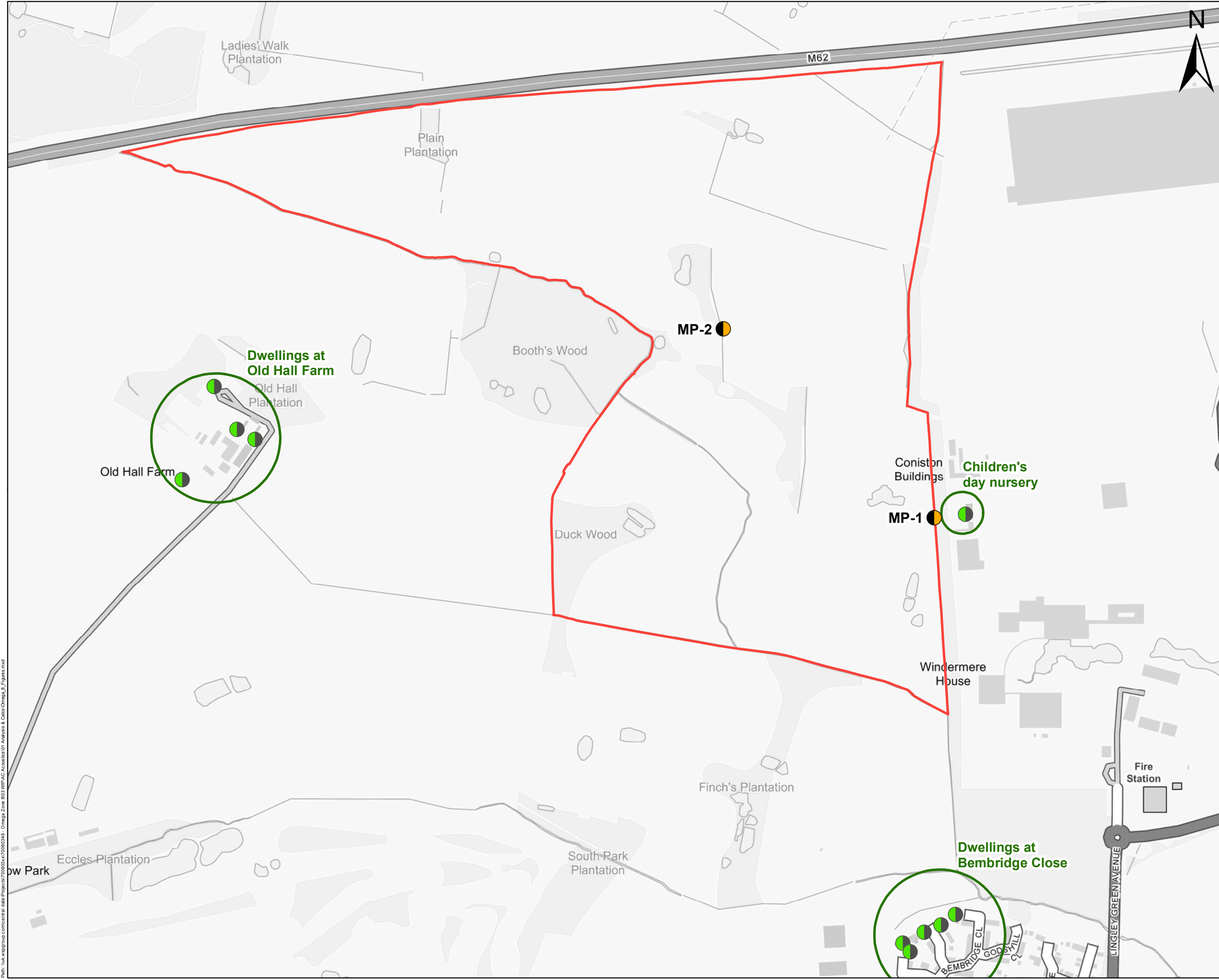


OMEGA ZONE 8, ST HELENS

Omega St Helens Ltd / T. J. Morris Limited



Document Title
ES Vol. 3 Figure 7.1 Noise
Measurement Locations and
Sensitive Receptors
Document No. OPP DOC.11.35a



THIS DRAWING MAY BE USED ONLY FOR THE PURPOSE INTENDED AND ONLY WRITTEN DIMENSIONS SHALL BE USED

Legend

- Application site
- Measurement locations
- Sensitive receptor locations
- Sensitive receptors

Copyright

This map is reproduced from Ordnance Survey material with the permission of Ordnance Survey on behalf of the Controller of Her Majesty's Stationary Office.

© Crown copyright

Unauthorised reproduction infringes Crown copyright and may lead to prosecution or civil proceedings.

© Crown copyright and database right 2019

Revision Details		By	Date	Suffix
		Check		

Drawing Status

FINAL

Job Title

Omega 8

Drawing Title

Figure 7.1:
Noise measurement locations
and noise and vibration
sensitive receptors

Scale at A3

1:6,000

Drawn		UKRAB600	
Stage 1 check	Stage 2 check	Originated	Date
CF	XX	KS	18/12/2019

0 200

Metres

WSP

Drawing Number