

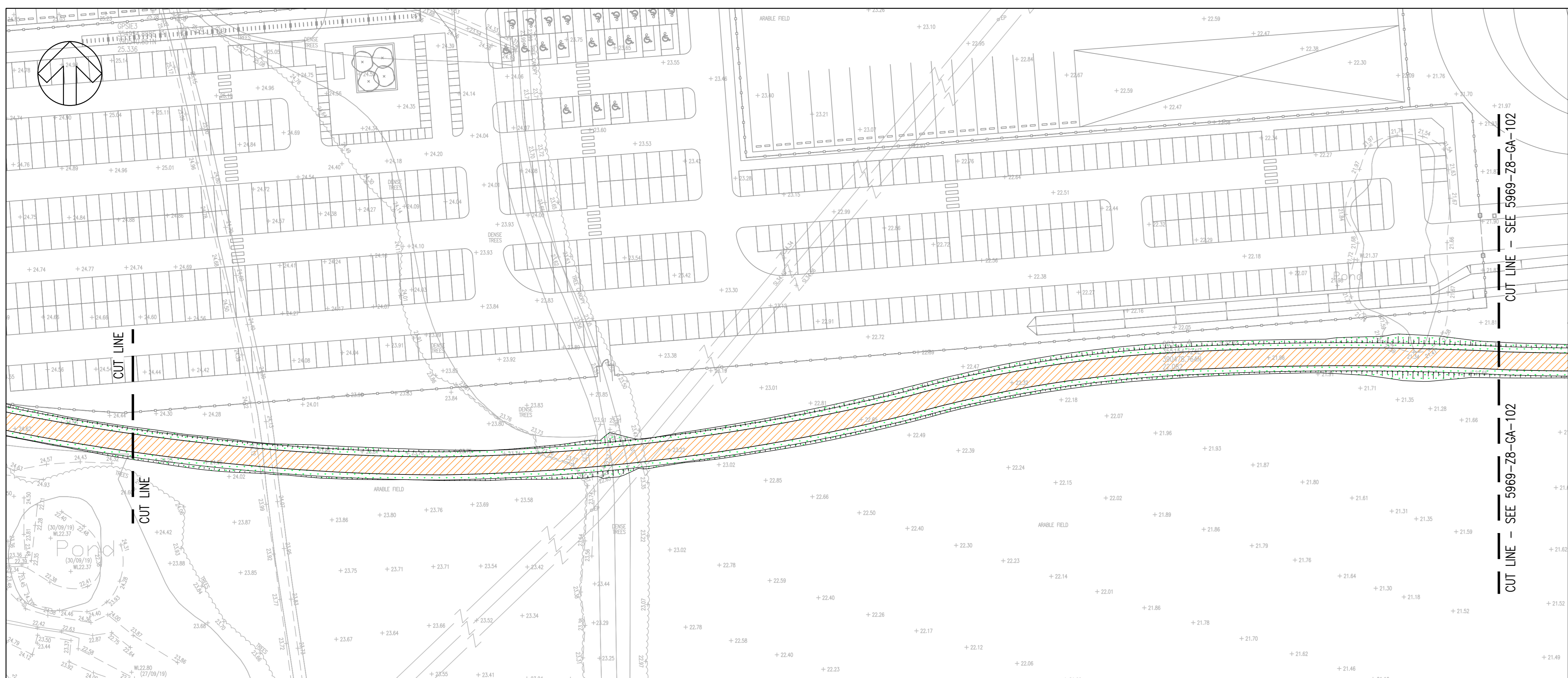
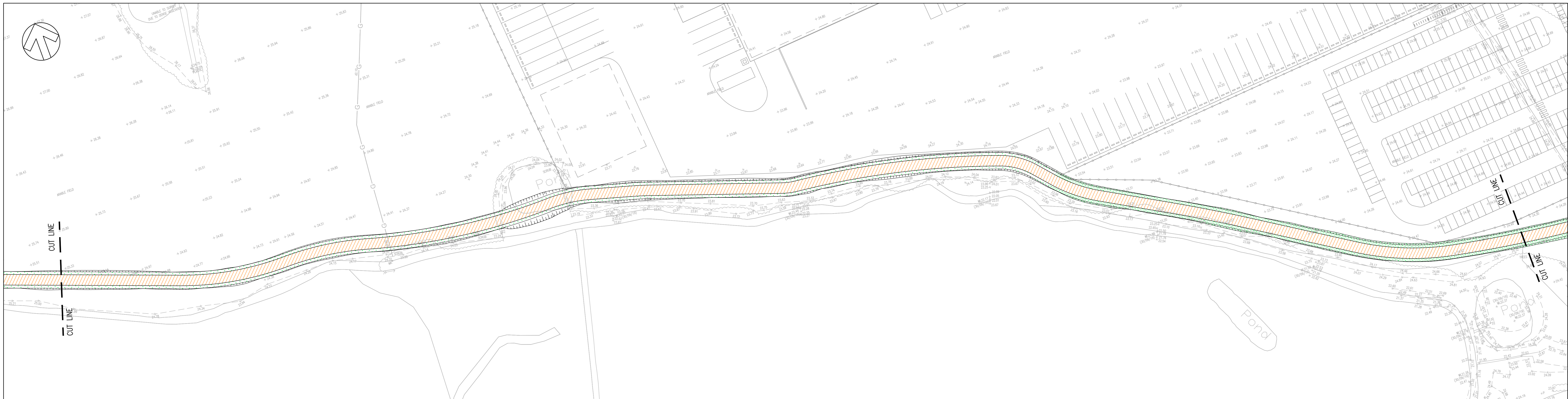
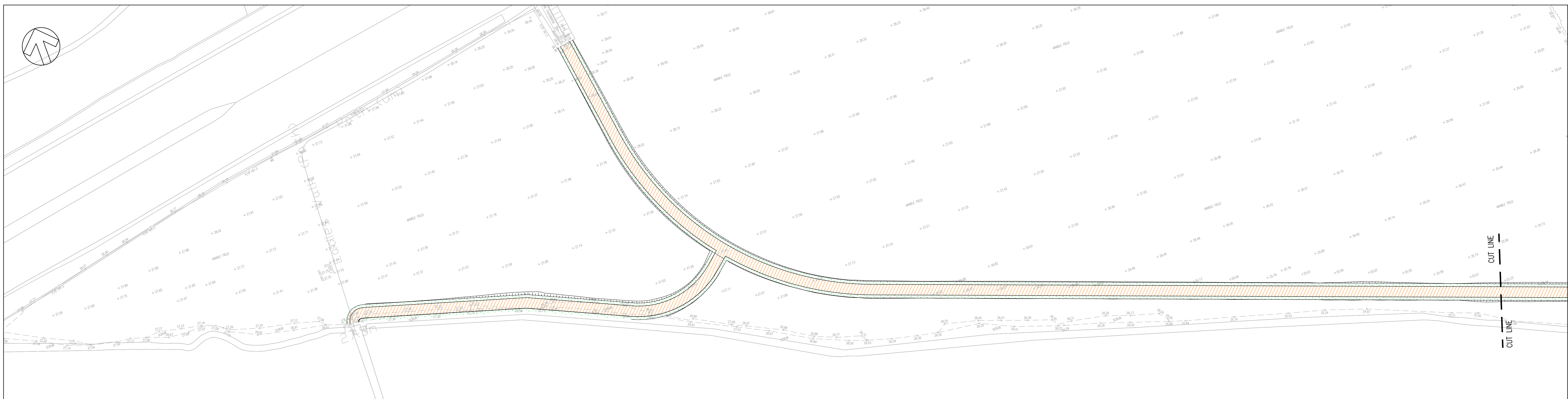
DO NOT SCALE


NOTES

1. ALL DIMENSIONS ARE IN METRES UNLESS STATED OTHERWISE.
2. THIS DRAWING SHOULD BE READ IN CONJUNCTION WITH ALL OTHER RELEVANT ARCHITECTURAL AND ENGINEERING DETAILS, DRAWINGS AND SPECIFICATIONS.
3. ALL WORKS ARE TO BE CONSTRUCTED IN ACCORDANCE WITH THE SPECIFICATION FOR HIGHWAY WORKS AND RELEVANT LOCAL / HIGHWAY AUTHORITY GUIDANCE.
4. ANY DISCREPANCIES SHOULD BE REPORTED TO THE ARCHITECT AND/OR ENGINEER IMMEDIATELY SO THAT CLARIFICATION CAN BE SOUGHT PRIOR TO THE COMMENCEMENT OF WORK.
5. UNDERGROUND SERVICES MAY BE PRESENT. CONTRACTOR TO CONFIRM THE PRECISE LINE AND DEPTH OF ANY UNDERGROUND SERVICES PRIOR TO ANY EXCAVATION WORK.
6. IN AREAS OF FILL THE PAVEMENT AND LANDSCAPING WILL BE CONSTRUCTED ON AN EMBANKMENT COMPRISING OF CLASS 1A FILL MATERIAL.

KEY

- PAVEMENT REF: F1. FOOTWAY / CYCLEWAY  
20mm SURFACE COURSE  
60mm BINDER COURSE  
150 SUB-BASE
- PAVEMENT REF: F2. FOOTWAY / CYCLEWAY (VEHICULAR LOADING)  
20mm SURFACE COURSE  
60mm BINDER COURSE  
200 SUB-BASE
- BUFF COLOURED TACTILE PAVING (BLUSTER) REF: F3
- PAVEMENT REF: P1. ASPHALT CONCRETE CONSTRUCTION  
50mm SURFACE COURSE  
60mm BINDER COURSE  
235mm BASE  
180mm SUB-BASE  
600mm CAPPING (IF REQUIRED)
- PAVEMENT REF: P2. ASPHALT CONCRETE RESURFACING  
50mm SURFACE COURSE  
VARYING REGULATING COURSE
- LANDSCAPING REF: L1  
MIN 150mm TOPSOIL. SEE LANDSCAPE ARCHITECTS DETAILS FOR TOPSOIL AND PLANTING REQUIREMENTS
- EARTHWORKS BATTER TO EXISTING



REV	DATE	BY	DESCRIPTION	CHK	APP
A	18/12/2019	TS	FIRST ISSUE		
DRAWING STATUS: <b>PLANNING</b>					
 8 First Street, Manchester, M15 4GU, UK T: +44 (0) 161 220 5000 wsp.com					
CLIENT: <b>OMEGA ST HELENS LTD / T.J. MORRIS LIMITED</b>					
PROJECT: <b>N/A</b>					
PROJECT: <b>OMEGA ZONE 8 ST HELENS</b>					
TITLE: <b>HIGHWAY WORKS PAVEMENT CONSTRUCTION SHEET 2 OF 2 INFRA DWG 2.2</b>					
SCALE: 1:500	CHECKED: SG	APPROVED: SG			
PROJECT NO: 70069989	DESIGNED: TS	DRAWN: TS	DATE: December 19		
DRAWING NO: 5969-Z8-GA-103	REV: A				
© WSP UK Ltd					