
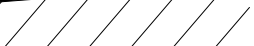

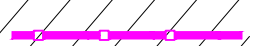



-  3m High weld mesh polyester powder coated paladin fence
-  2.1m High weld mesh polyester powder coated paladin fence
-  2.1m High hit & miss timber fence
-  3m High close boarded timber fence
-  1.2m High post & rail timber fence

notes  
 this drawing and design is the copyright of aja architects llp and must not be reproduced in part or in whole without prior written consent. contractors must verify all dimensions on site before commencing work or preparing shop drawings. If in doubt ASK.  
 Where this drawing contains any Ordnance Survey mapping material, it has been reproduced under license number 100052278.  
 Ordnance Survey © Crown copyright

0m 50m 100m  
 Scale



PHOTO OF TYPICAL CLOSEBOARDED TIMBER FENCE



PHOTO OF TYPICAL POST & RAIL TIMBER FENCE

E	23-04-20	Smoking Shelter relocated	spp
D	20-04-20	Site layout revised as Drg No 6385 - 181 D	CT
		Scale bar added	
C	11-03-20	Post & rail fence added around balance pond area. Fence line adjusted to SE corner adjacent to footpath. Trailer parking extended to SE corner. Car park layout adjusted. Gates added to car park & site entrances	CT
B	21-01-20	Site Plan updated to show VMU omitted	rp
A	18-12-19	Minor amendments	Kmf
no.	date	revision	by



aja architects llp  
 1170 Elliott Court  
 Herald Avenue  
 Coventry Business Park  
 COVENTRY CV5 6UB  
 T: 024 7625 3200  
 F: 024 7625 3210  
 E: aja@aja-architects.com  
 W: www.aja-architects.com

aja architects llp is a limited liability partnership registered in England No. OC326721  
 client

Omega St Helens Ltd/  
 TJ Morris Ltd

project  
 Unit 1  
 Omega Zone 8  
 St. Helens

drawing  
 Fencing Details  
 UNIT 1 DWG. 14

scale various @ A1 drawn rp  
 checked sp date 12-12-19

no  
 6385 - 191 E

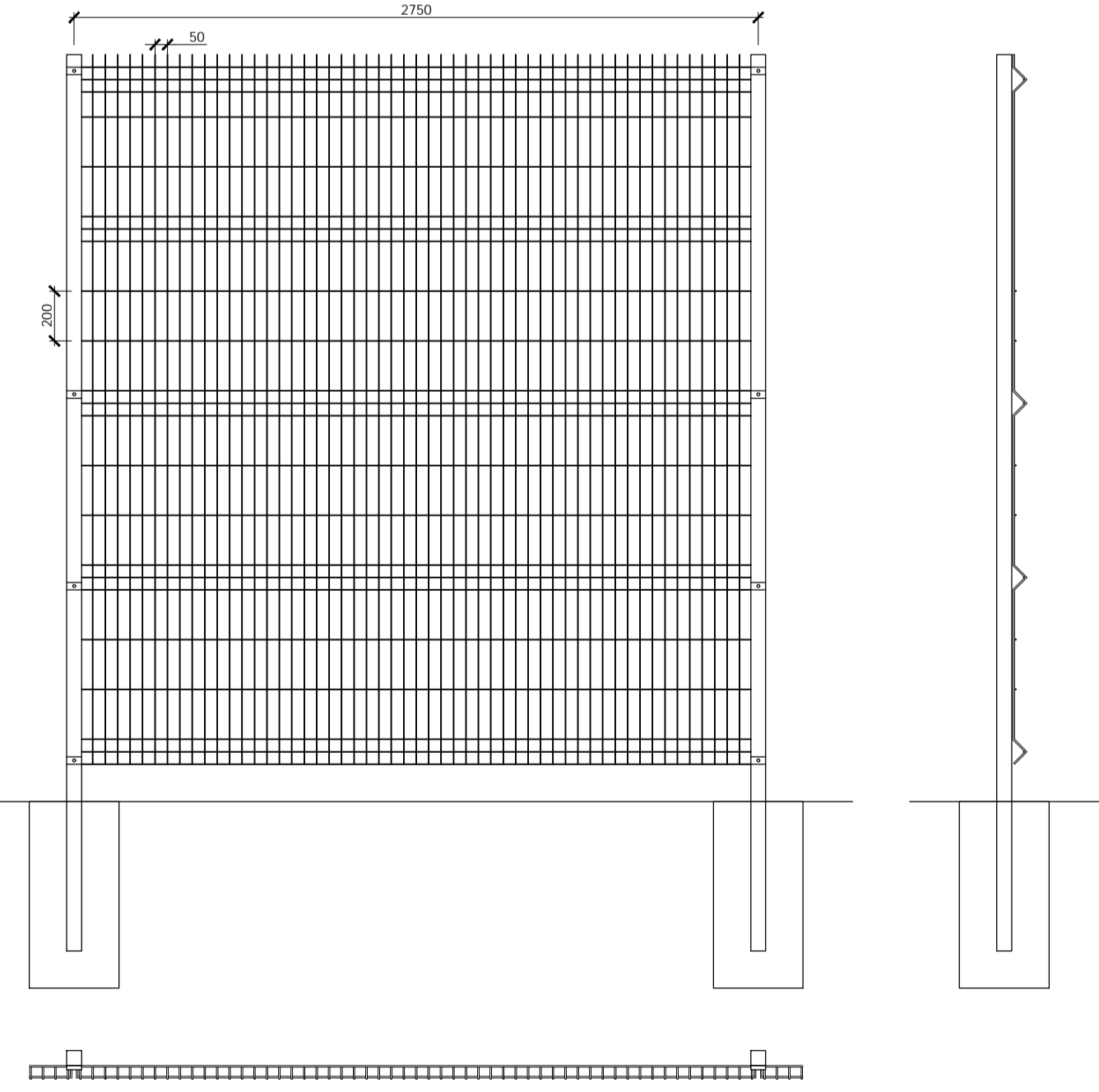
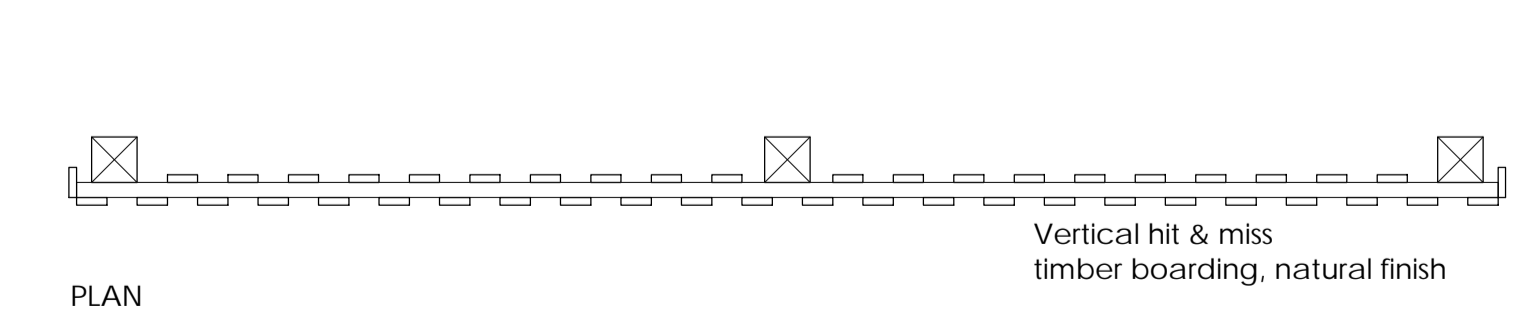
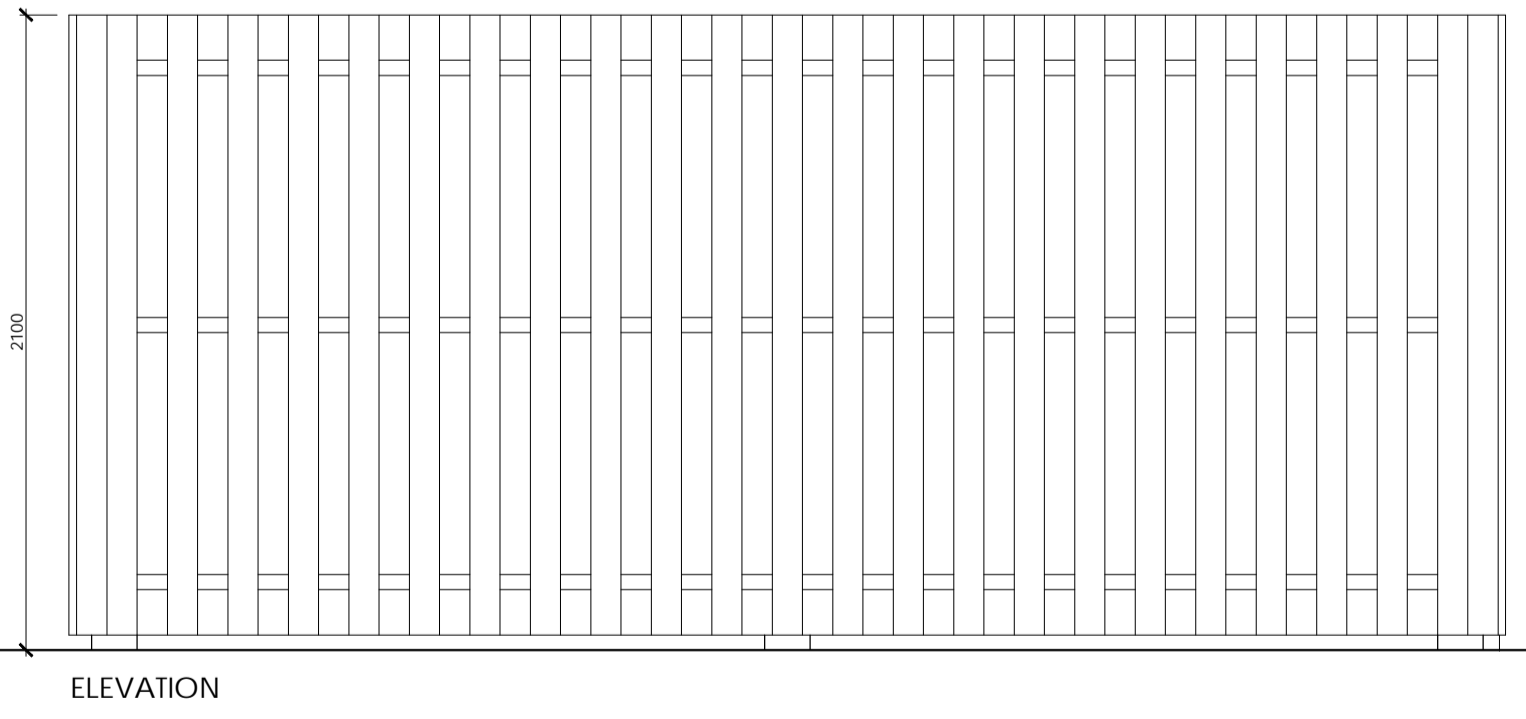


PHOTO OF TYPICAL HIT & MISS TIMBER FENCE



TYPICAL DETAIL FOR 2.1M HIGH TIMBER HIT & MISS FENCE TO REAR OF PALLET STORAGE  
 scale 1:25