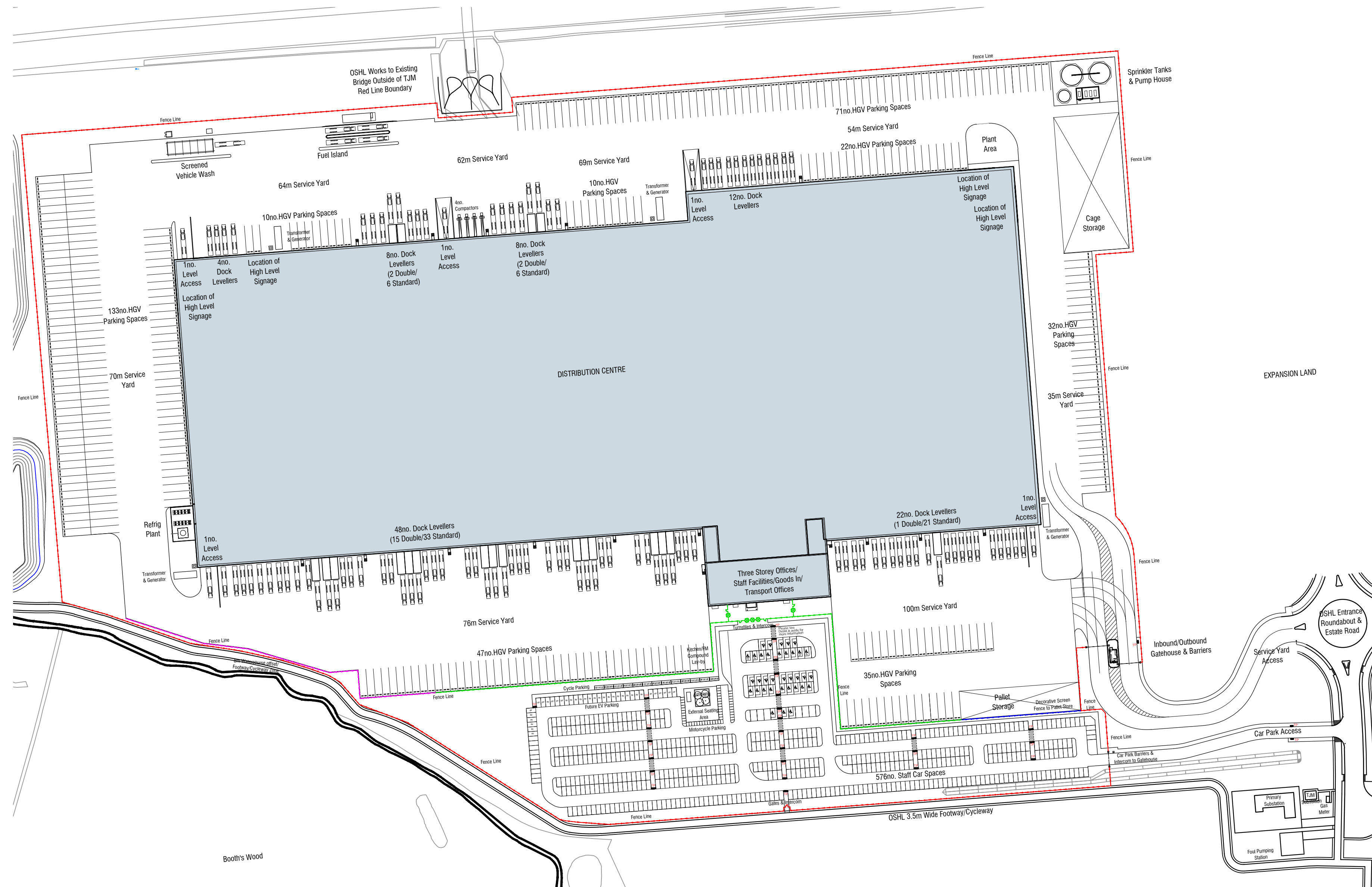


notes
 this drawing and design is the copyright of aja architects llp and must not be reproduced in part or in whole without prior written consent. contractors must verify all dimensions on site before commencing work or preparing shop drawings. If in doubt! ASK.
 Where this drawing contains any Ordnance Survey mapping material, it has been reproduced under license number 100052278. Ordnance Survey © Crown copyright







-  3m High Weld mesh polyester powder coated paladin fence
-  2.1m High Weld mesh polyester powder coated paladin fence
-  2.1m High Hit & Miss Timber fence
-  3m High Closeboarded Timber fence



PHOTO OF TYPICAL CLOSEBOARDED TIMBER FENCE

B	21-01-20	Site Plan updated to show VMU omitted	rp
A	18-12-19	Minor amendments	Kmf
no.	date	revision	by



aja architects llp
 1170 Elliott Court
 Herald Avenue
 Coventry Business Park
 COVENTRY CV5 6UB
 T: 024 7625 3200
 F: 024 7625 3210
 E: aja@aja-architects.com
 W: www.aja-architects.com

aja architects llp is a limited liability partnership registered in England No. OC326721
 client

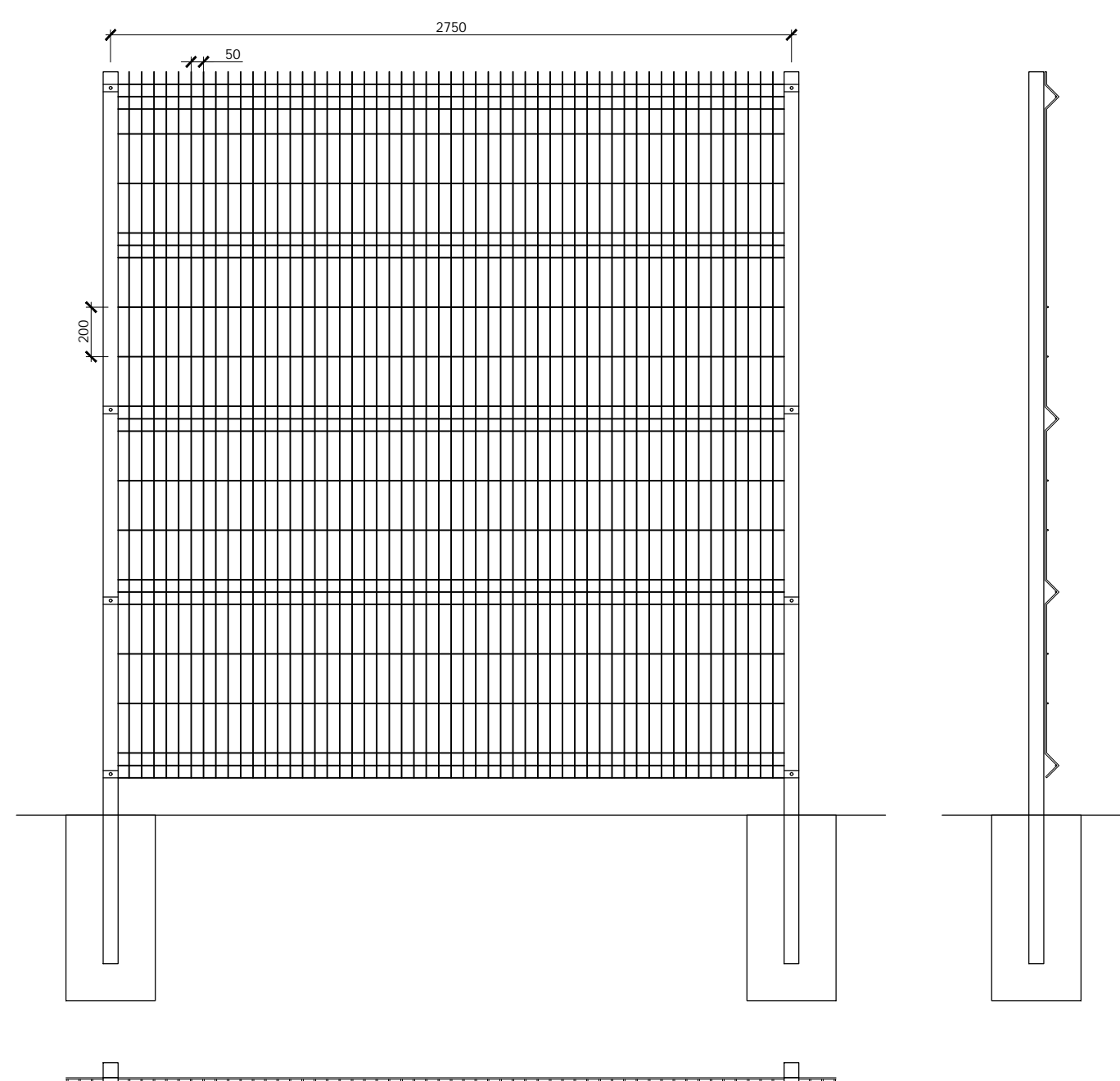
Omega St Helens Ltd/
 TJ Morris Ltd

project
 Unit 1
 Omega Zone 8
 St. Helens

drawing
 Fencing Details
 UNIT 1 DWG. 14

scale various @ A1 drawn rp
 checked sp date 12-12-19

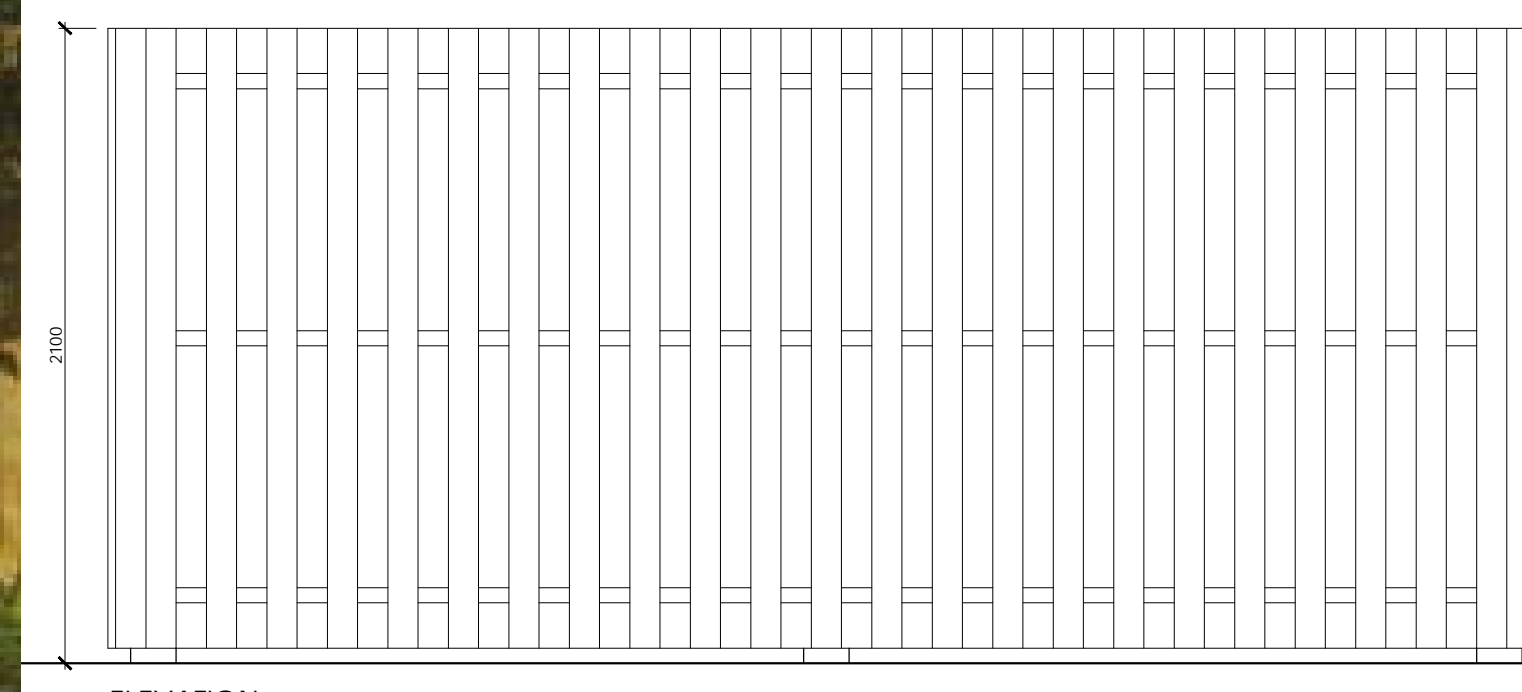
no
 6385 - 191 B



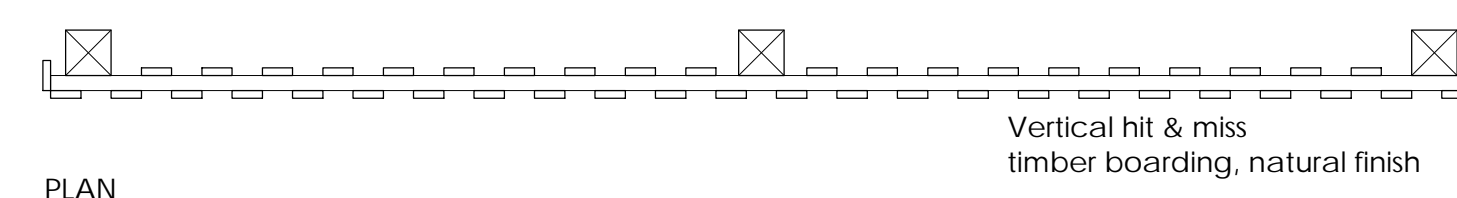
TYPICAL DETAIL FOR 2.1M & 3M HIGH FENCE
 Weld mesh polyester powder coated paladin fence, scale 1:25



PHOTO OF TYPICAL HIT & MISS TIMBER FENCE



ELEVATION



PLAN

TYPICAL DETAIL FOR 2.1M HIGH TIMBER HIT & MISS FENCE TO REAR OF PALLET STORAGE
 scale: 1:25

Vertical hit & miss
 timber boarding, natural finish