



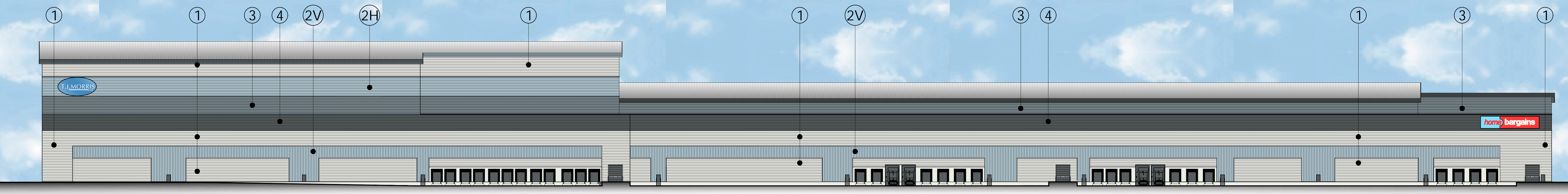
Office Main Entrance
Close up View, scale 1:100



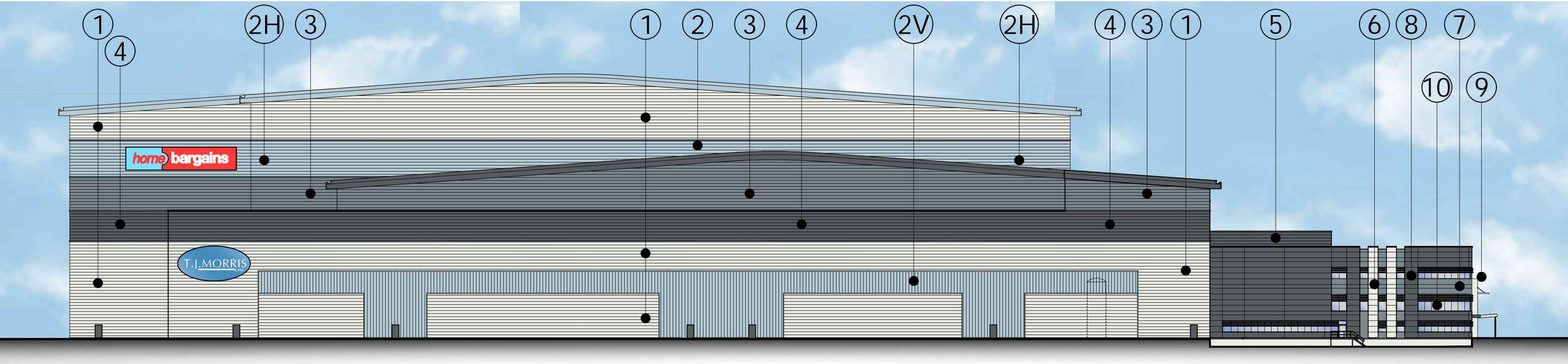
Office Building Side Elevation
Close up View, scale 1:100



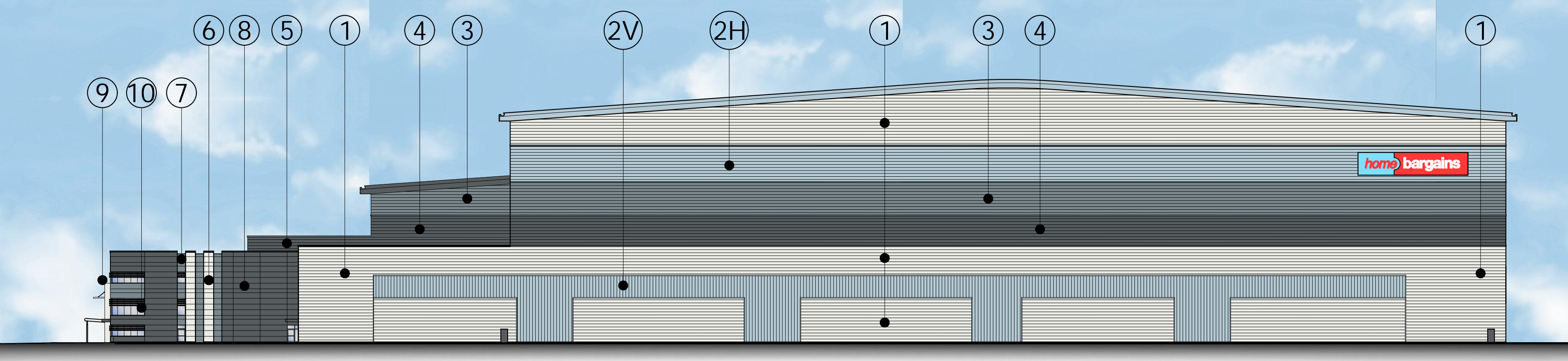
South Elevation



North Elevation



West Elevation



East Elevation

Schedule of Material

ROOF CONSTRUCTION

High Bay & Low Bay-CA Twin-Therm Griffon System:
Profiled steel cladding comprising:
0.7mm thick outer sheet, with HPS200 Ultra Finish.
Colour: Goosewing Grey, RAL 080 70 05

Translucent (mansafe), non fragile insulated
triple skin GRP roof lights.

Uninsulated eaves gutters,
manufactured from 1.5mm pre-galvanised steel with
1.2mm pre-bonded PVC lining, with siphonic drainage,
complete with weir overflows.

Projecting eaves with PPC profiled steel fascia,
with pre-formed mitred corners and trapezoidal soffit.
Higher Level - Colour: Ice Blue, RAL 230 80 10
Lower Level - Colour: Slate Grey/Basalt, RAL 7012

Roof Generally-CA Twin-Therm Pitched Roof:
Profiled steel cladding comprising:
0.7mm thick outer sheet, with HPS200 Ultra Finish.
Colour: Goosewing Grey, RAL 080 70 05

Insulated valley gutters and parapet gutters,
manufactured from 1.5mm pre-galvanised steel with
1.2mm pre-bonded PVC lining, with siphonic drainage,
complete with weir overflows.

WALL CONSTRUCTION

Trapezoidal profiled built up wall
cladding system horizontally laid comprising:
0.7mm thick outer sheet.
Colour: White, RAL 9003.

Trapezoidal profiled built up wall
cladding system vertically laid comprising:
0.3mm thick outer sheet.
Colour: Ice Blue, RAL 230 80 10

Trapezoidal profiled built up wall
cladding system horizontally laid comprising:
0.7mm thick outer sheet.
Colour: Ice Blue, RAL 230 80 10

Trapezoidal profiled built up wall
cladding system horizontally laid comprising:
0.7mm thick outer sheet.
Colour: Adventura/Alaska Grey, RAL 7000

Trapezoidal profiled built up wall
cladding system horizontally laid comprising:
0.7mm thick outer sheet.
Colour: Basalt/Slate Grey, RAL 7012

Trapezoidal profiled built up wall
cladding system horizontally laid comprising:
0.7mm thick outer sheet.
Colour: Basalt/Slate Grey, RAL 7012

EXTERNAL WALLS AND WINDOWS to Office Area

Horizontal spanning composite microrib panel,
with pre-formed mitred corners.
Colour: White, RAL 9003

Horizontal spanning composite microrib panel,
with pre-formed mitred corners.
Colour: Adventura/Alaska Grey, RAL 7000

Horizontal spanning composite microrib panel,
with pre-formed mitred corners.
Colour: Basalt/Slate Grey, RAL 7012

Projecting frame around main entrance formed in composite
flat steel faced panel, with pre-formed mitred corners.
Colour: White, RAL 9003

PPC Window /door frames and curtain walling with grey tinted
anti-sun glazing and grey lookalike panel spandrels where required.
External frame colour: Basalt/Slate Grey, RAL 7012.
Internal frame colour: White, RAL 9003.

PPC Louvers to main offices.
Colour: White, RAL 9003

Preformed flashing as shown to match cladding.
Colour: To match cladding

ENTRANCE CANOPY
Free standing steel & glass canopy.
Galvanised steel columns with heavy duty with
exterior grade paint protection system.
Colour: White, RAL 9003

PERSONNEL DOORS
Metal faced flush Door, with Paint finish.
Colour: To match Basalt/Slate Grey, RAL 7012

LOADING DOORS
Electrically operated steel sectional insulated level
entry doors with vision panels.
Hormann UK Ltd, Model Ref: SPU 40 (or similar approved)
Colour: To match Basalt/Slate Grey, RAL 7012
1500mm high painted galvanised steel bollard
protection to edges of door openings.

DOCK LEVELLERS DOORS
Electrically operated steel sectional insulated doors
with vision panels to standard docks/double docks,
together with Dock Levellers and Shelters.
Colour: To match Basalt/Slate Grey, RAL 7012

'Prowall' system or similar approved to be installed to
all dock levellers.

EXTERNAL PLANT ENCLOSURE
Vertical hit & miss timber boarding finished with stain.
Stain Colour: Natural

notes
this drawing and design is the copyright of aja architects ltd and must not be
reproduced in part or in whole without prior written consent. contractors must
verify all dimensions on site before commencing work or preparing shop drawings.
it is to be used as a guide only.
where this drawing contains any Ordnance Survey mapping material, it has been
reproduced under license number 100022276.
Ordnance Survey © Crown copyright

A 14-01-20 Elevation titles amended, updated spp
to suit floor plans

no.	date	revision	by
-----	------	----------	----



aja architects ltd
11/70 Elliott Court
Herold Avenue
Coventry Business Park
COVENTRY CV5 8UB
aja architects ltd is a limited liability partnership registered in England No. 00386721
client

Omega St Helens Ltd/
TJ Morris Ltd

project

Unit 1
Omega Zone 8
St. Helens

drawing

Proposed Elevations
UNIT 1 DWG.2

scale	1:500 @ A0	drawn	rp
-------	------------	-------	----

checked	spp	date	12/12/19
---------	-----	------	----------

no

6385 - 182 A