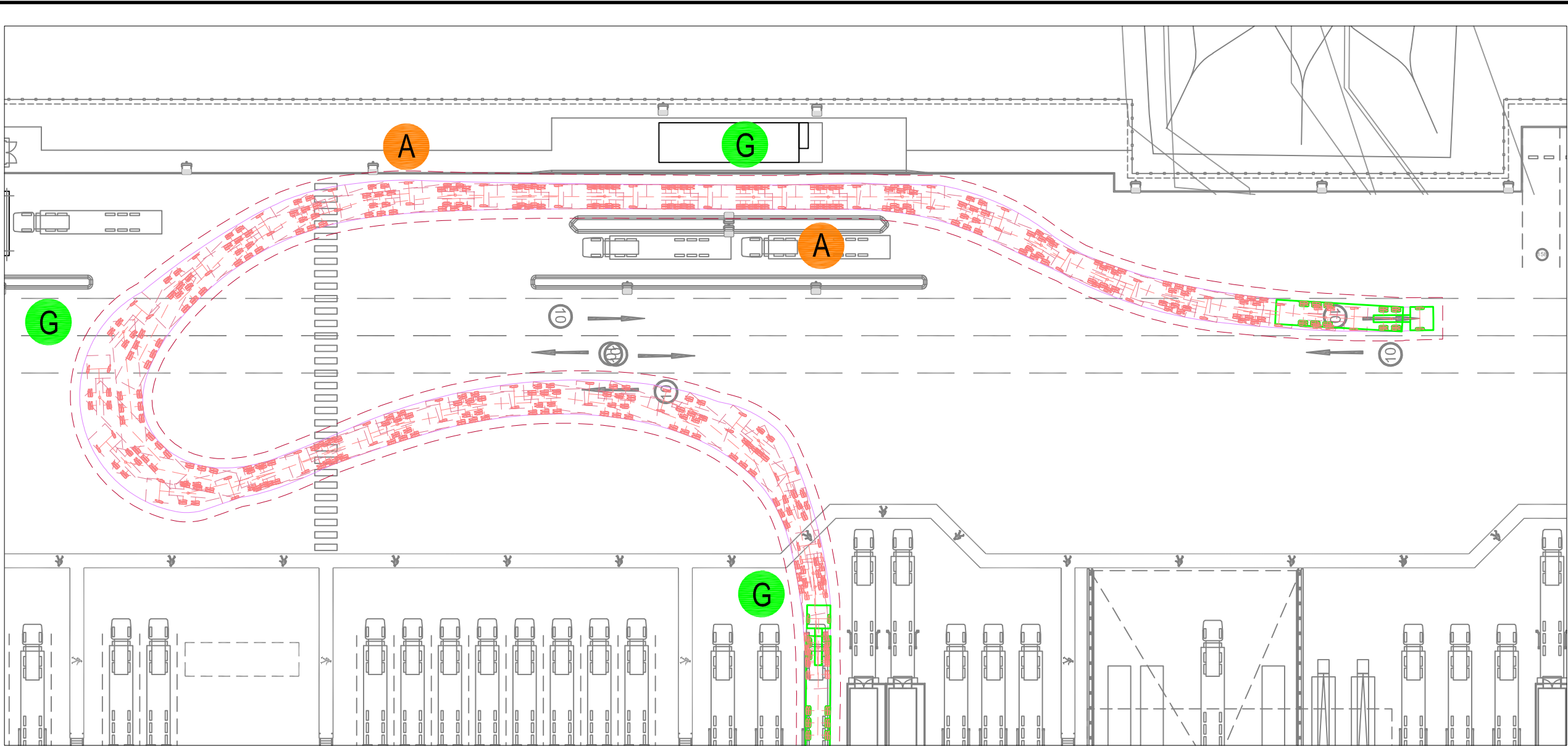
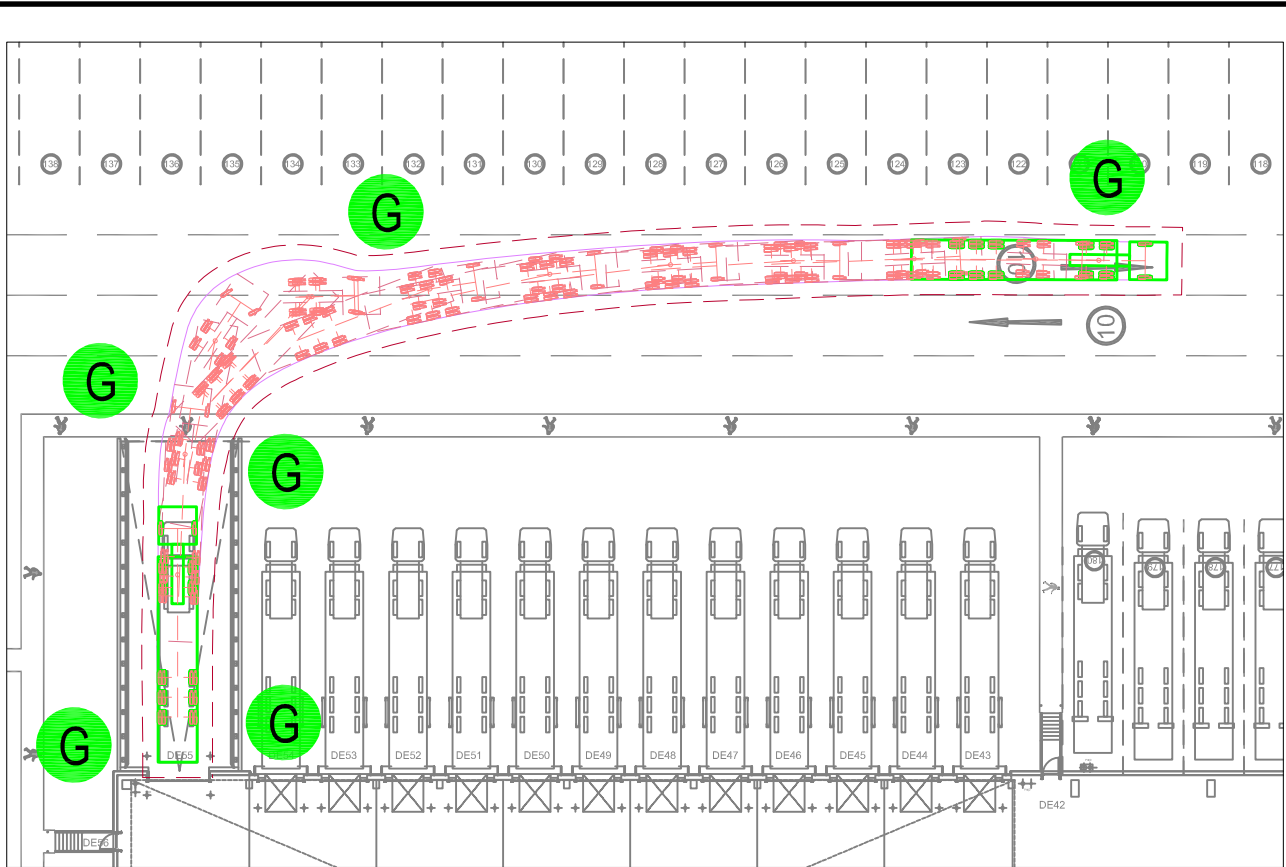


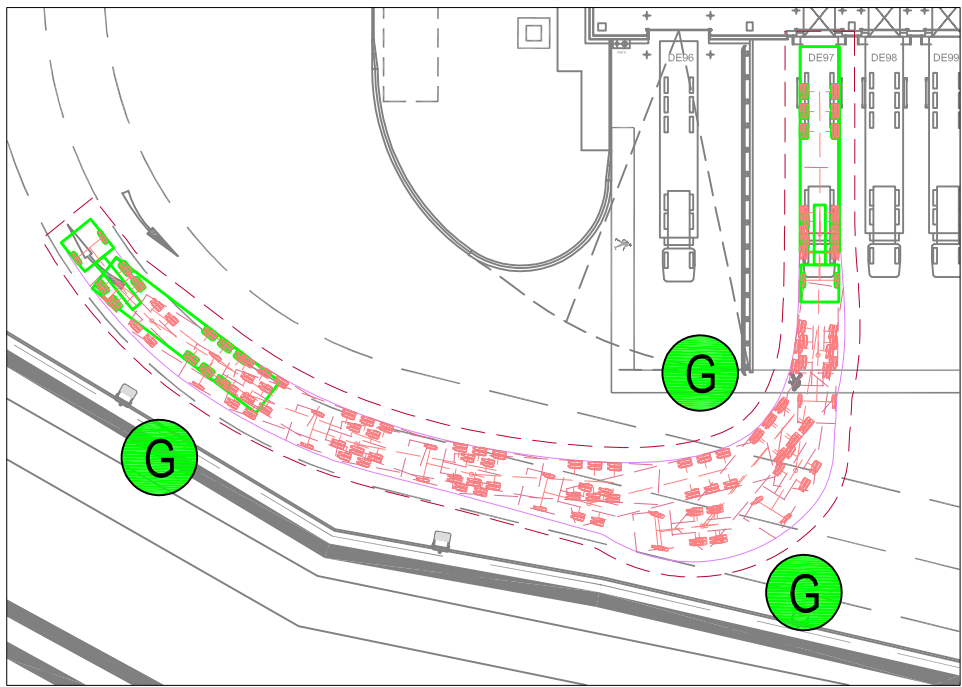
LARGE 'HGV' VEHICLE REVERSE MANOEUVRE
INTO DOCK LEVELLER



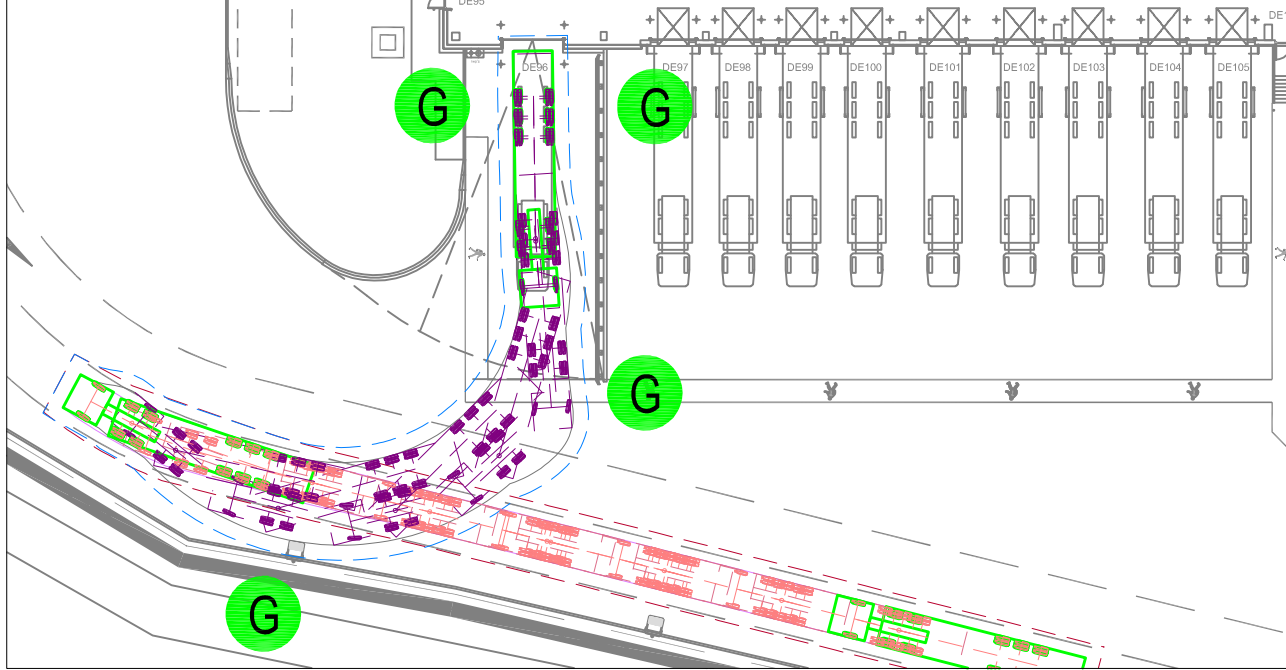
LARGE 'HGV' VEHICLE FORWARD MANOEUVRE
FROM DOCK LEVELLER THROUGH FUEL ISLAND



LARGE 'HGV' VEHICLE FORWARD MANOEUVRE
FROM LEVEL ACCESS



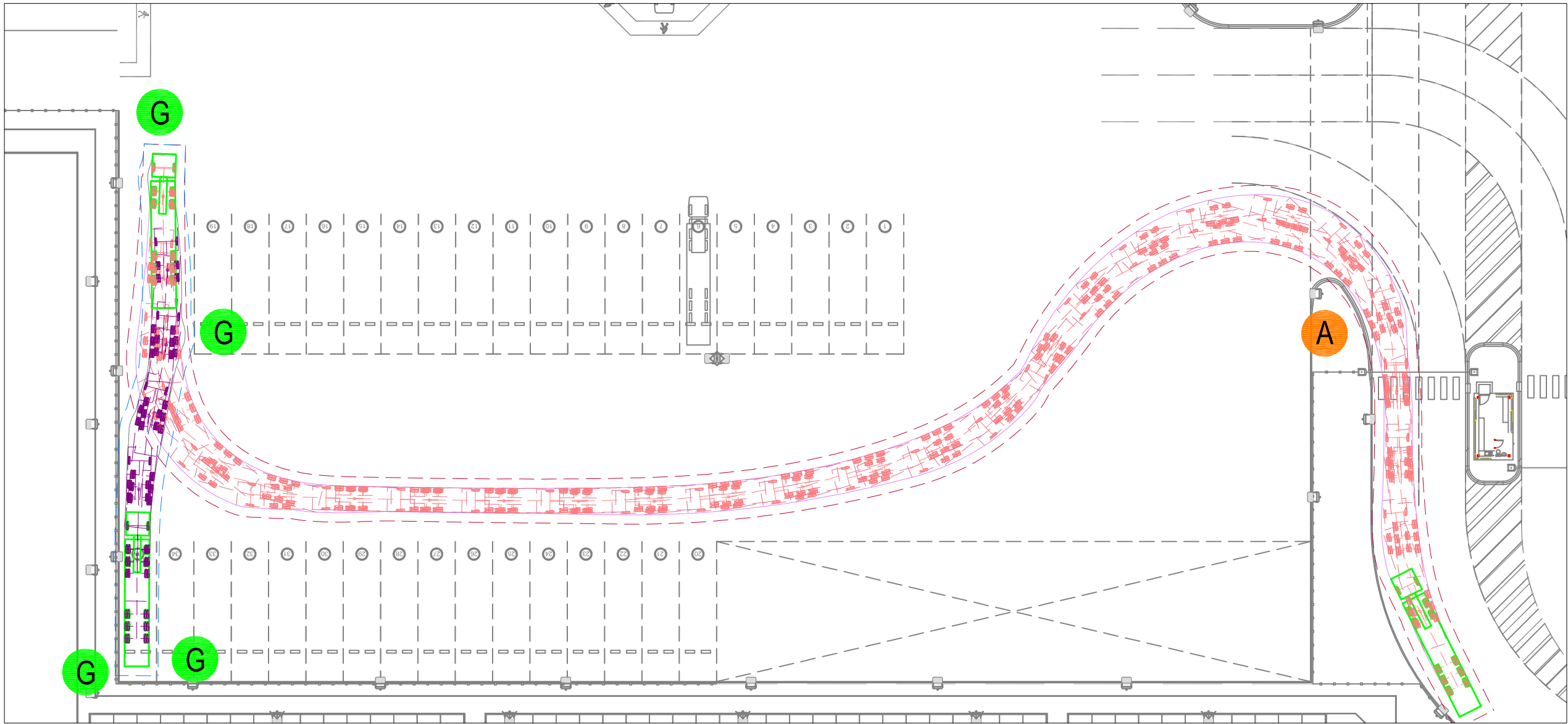
LARGE 'HGV' VEHICLE FORWARD
MANOEUVRE FROM DOCK LEVELLER



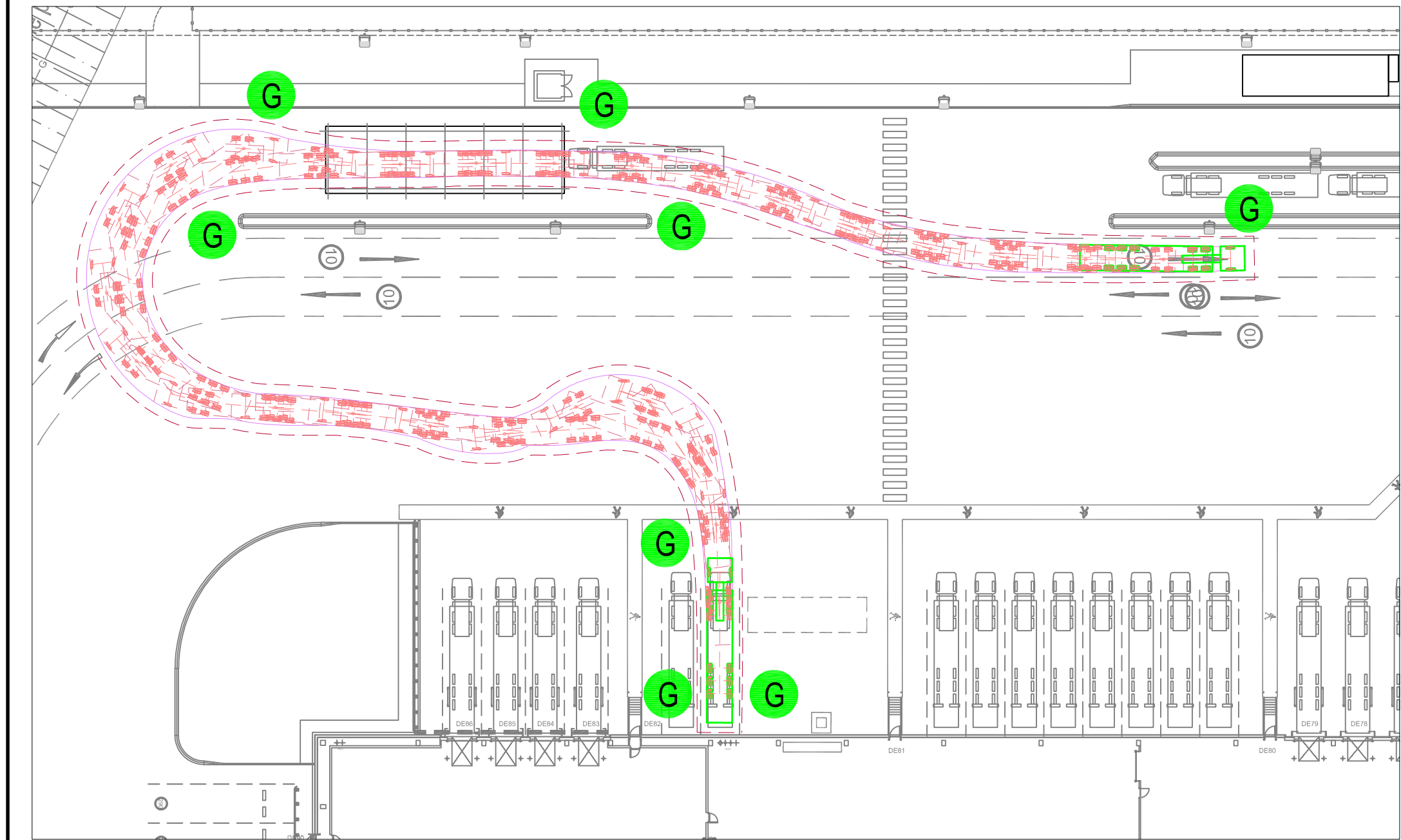
LARGE 'HGV' VEHICLE REVERSE MANOEUVRE
INTO LEVEL ACCESS



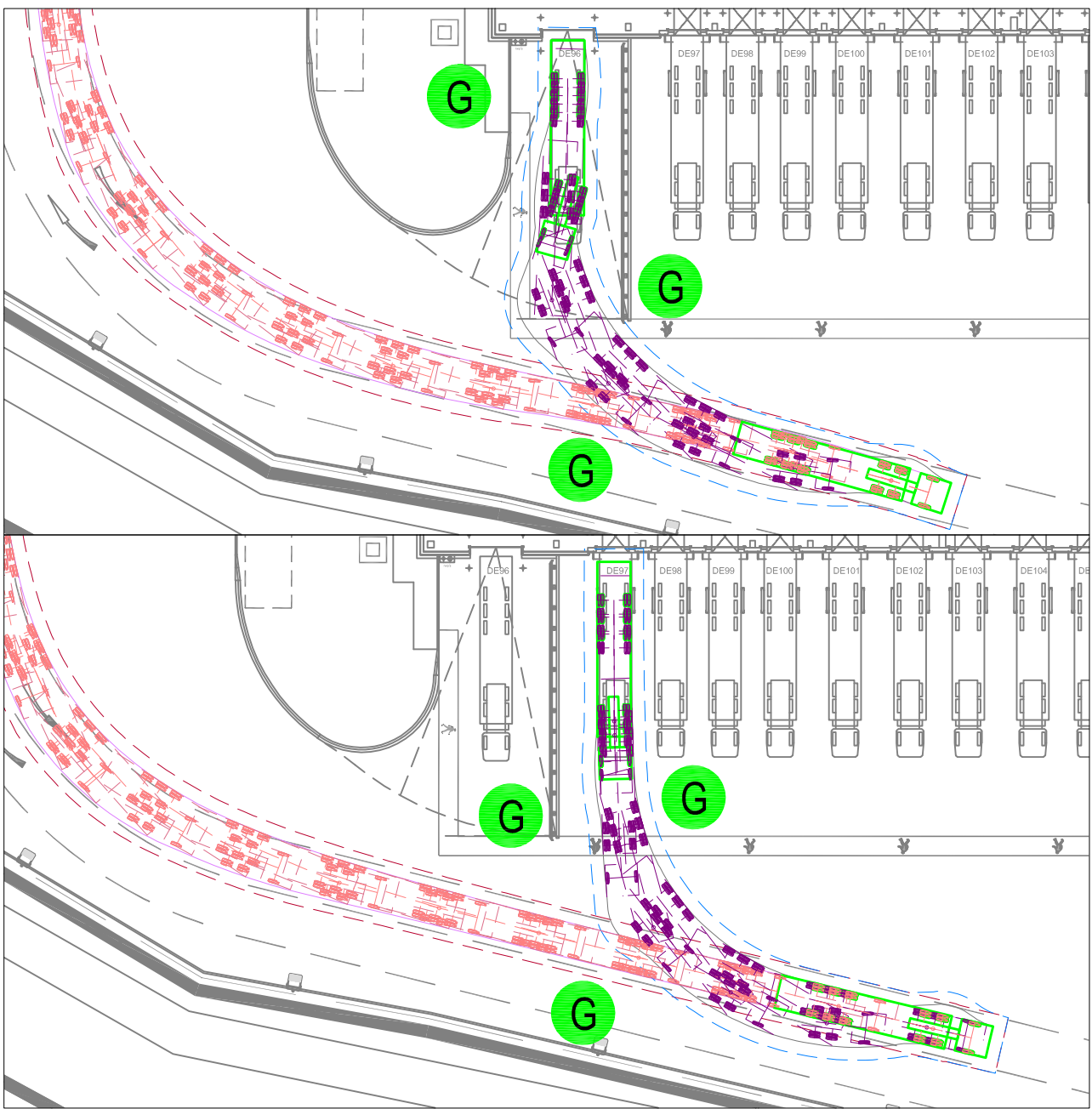
LARGE 'HGV' VEHICLE FORWARD MANOEUVRE
FROM DOCK LEVELLER



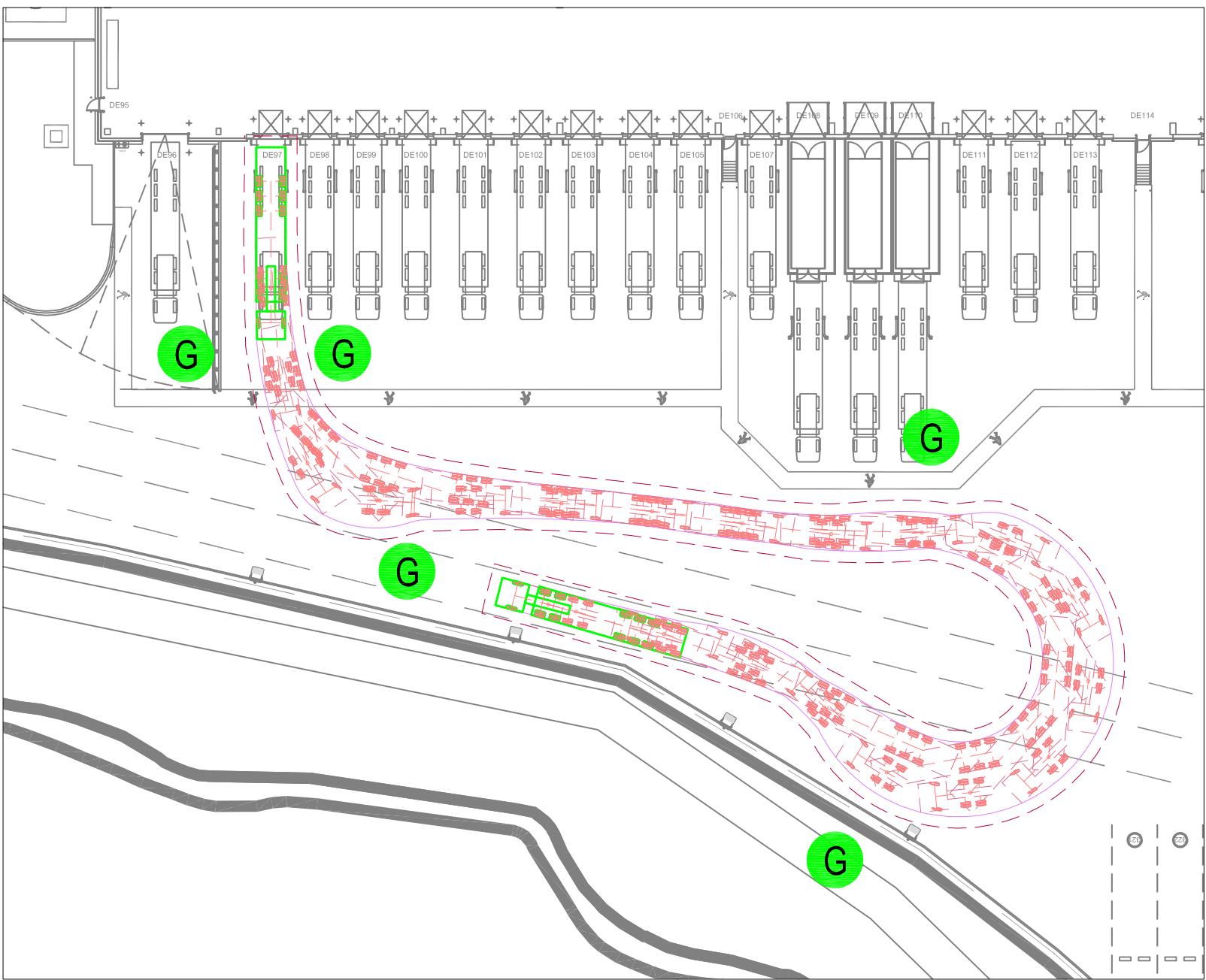
LARGE 'HGV' VEHICLE FORWARD MANOEUVRE ENTERING DISTRIBUTION
CENTRE SITE & REVERSE MANOEUVRE INTO PARKING BAY



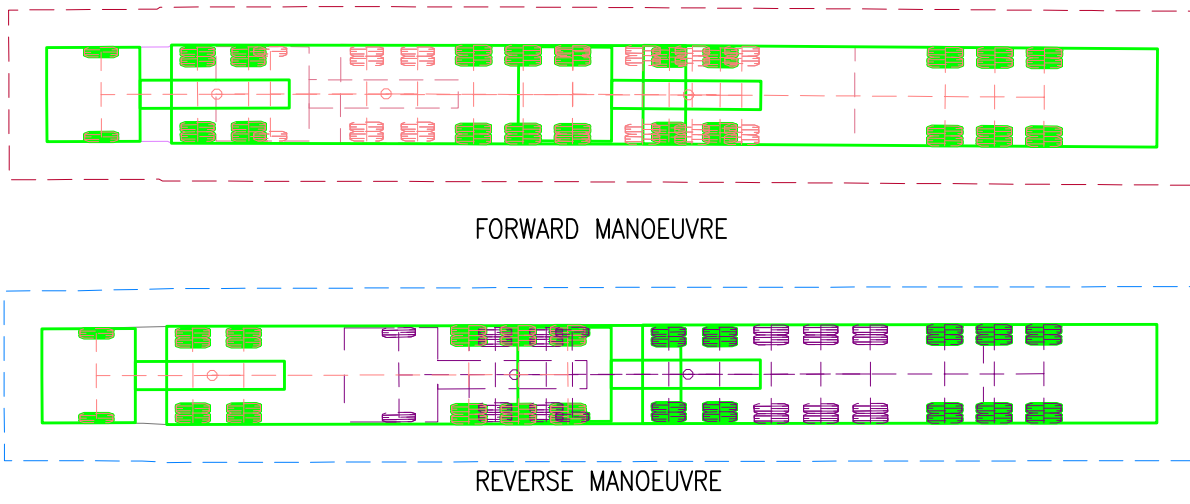
LARGE 'HGV' VEHICLE FORWARD MANOEUVRE
FROM PARKING BAY THROUGH SCREENED VEHICLE WASH



LARGE 'HGV' VEHICLE REVERSE MANOEUVRE
INTO LEVEL ACCESS & DOCK LEVELLER

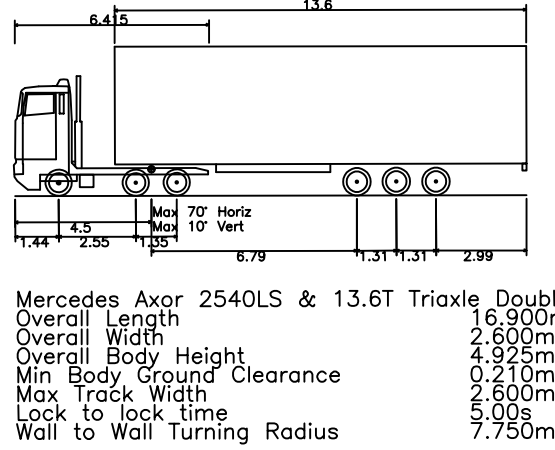


LARGE 'HGV' VEHICLE FORWARD
MANOEUVRE FROM DOCK LEVELLER



TRACKING INDICATOR

- (M) IMPACT
- (R) ALERT - PROBABLE IMPACT WITH OBSTRUCTION (0-499mm).
- (A) CAUTION - CLOSE PROXIMITY TO OBSTRUCTION. (500-999mm)
- (G) TRACKING CLEARANCE APPEARS SATISFACTORY (1000mm+).
- (B) BLIND SIDE MANOEUVRE.
- (S) SEVERE STEERING / TURNING ON THE SPOT.



B	18/07/19	UPDATED TO SUIT LATEST ARCHITECTS SITE LAYOUT.	PMJ	DNT	DNT
A	04/12/19	FIRST ISSUE.	PMJ	DNT	DNT
Rev.	Date	Description	Drawn	Chkd.	Appd.
FAIRHURST			Client:		
Clifton Heights Triangle West Clifton BRISTOL BS8 1EJ			T.J.MORRIS		
Tel: 0117 925 0259 Fax: 0844 381 4412					

Project Title:
**PROJECT OMEGA
NEW DISTRIBUTION HUB
WARRINGTON**

Drawing Title:
**DETAILED PLOT
TRACKING SHEET 1 OF 2**

Scale of A1: 1:500	Status: PLANNING		
Drawn: PMJ	Checked: DNT	Approved: DNT	
Date: 04/12/19	Date: 04/12/19	Date: 04/12/19	
Drawing No.: 131504	UNIT 1 DWG.18		Revision: B