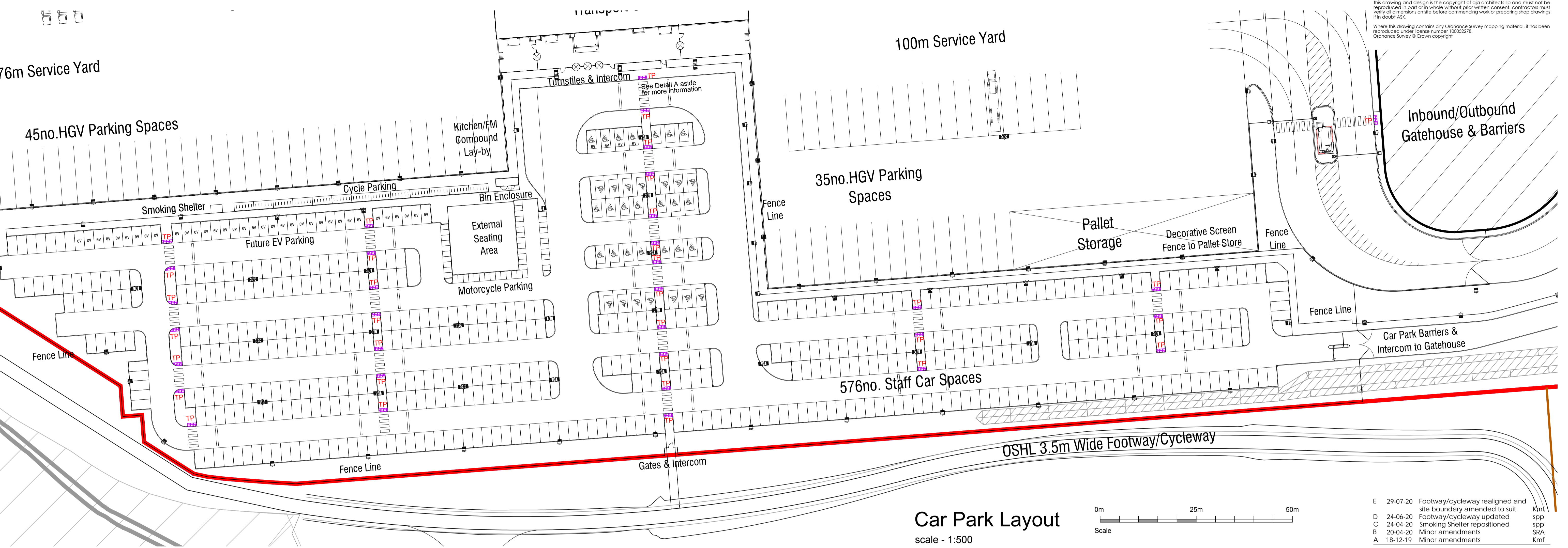
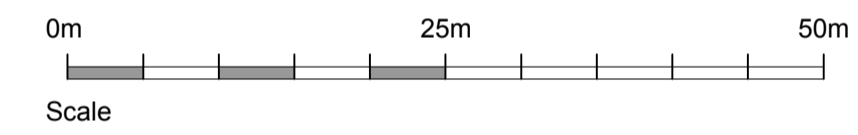


notes  
 this drawing and design is the copyright of aja architects llp and must not be reproduced in part or in whole without prior written consent. contractors must verify all dimensions on site before commencing work or preparing shop drawings. If in doubt ASK.  
 Where this drawing contains any Ordnance Survey mapping material, it has been reproduced under license number 100052278.  
 Ordnance Survey © Crown copyright



**Car Park Layout**  
 scale - 1:500



TP - Tactile Paving  
 400mmx400mm

| no. | date     | revision  | by  |
|-----|----------|---|-----|
| E   | 29-07-20 | Footway/cycleway realigned and site boundary amended to suit. | Kmf |
| D   | 24-06-20 | Footway/cycleway updated                                      | spp |
| C   | 24-04-20 | Smoking Shelter repositioned                                  | spp |
| B   | 20-04-20 | Minor amendments  | SRA |
| A   | 18-12-19 | Minor amendments  | Kmf |



aja architects llp  
 1170 Elliott Court  
 Herald Avenue  
 Coventry Business Park  
 COVENTRY CV5 6UB  
 T: 024 7625 3200  
 F: 024 7625 3210  
 E: aja@aja-architects.com  
 W: www.aja-architects.com

aja architects llp is a limited liability partnership registered in England No. OC326721  
 client

**Omega St Helens Ltd/  
 TJ Morris Ltd**

project  
**Unit 1  
 Omega Zone 8  
 St. Helens**

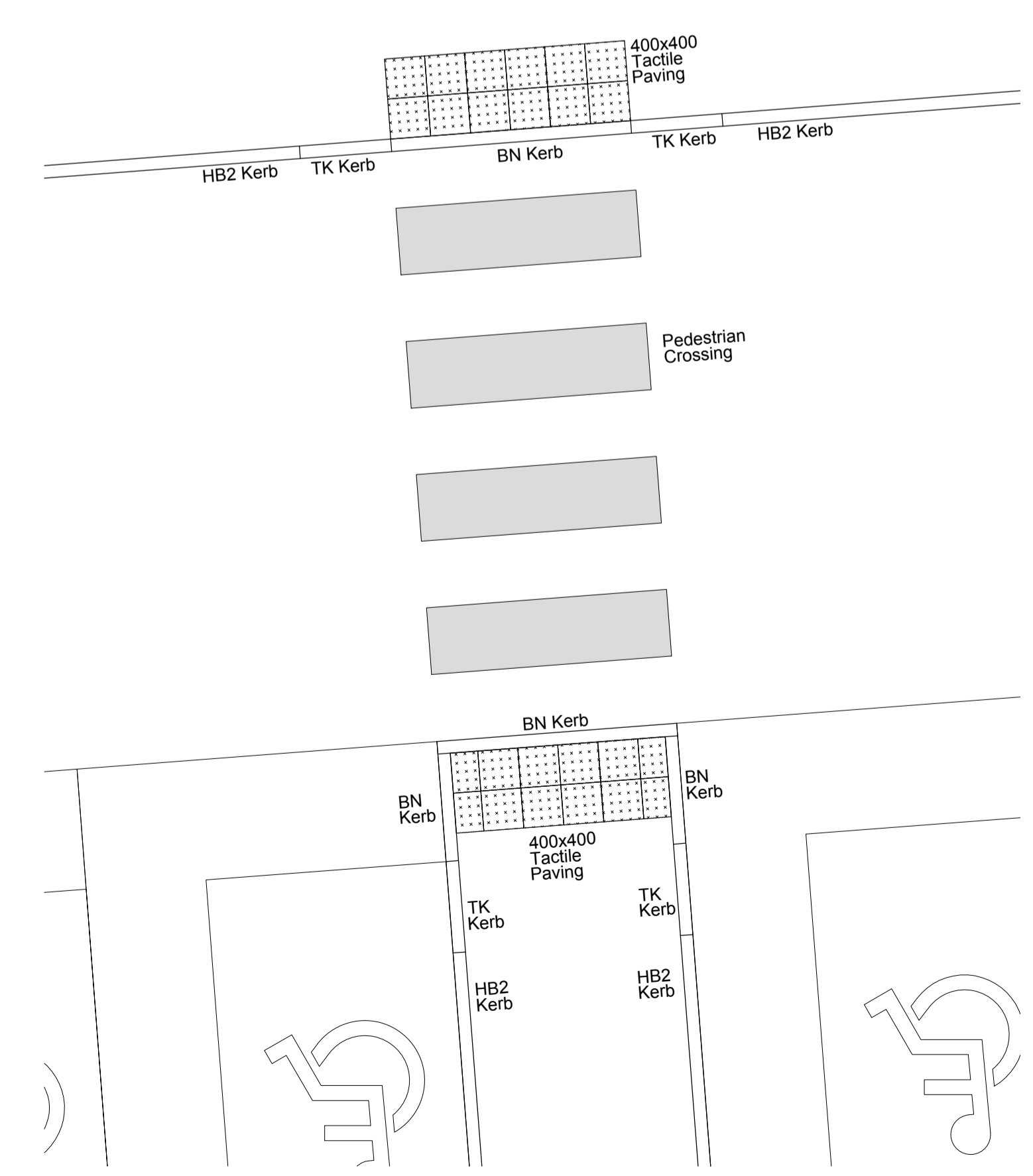
drawing  
**Dropped Kerb &  
 Tactile Paving  
 UNIT 1 DWG. 12**

scale various @ A1 drawn rp

checked sp date 12-12-19

no

**6385-190 E**



**Detail A - Typical Tactile Paving Detail**  
 (showing tactile paving including kerbs around offices)  
 scale 1:50

