

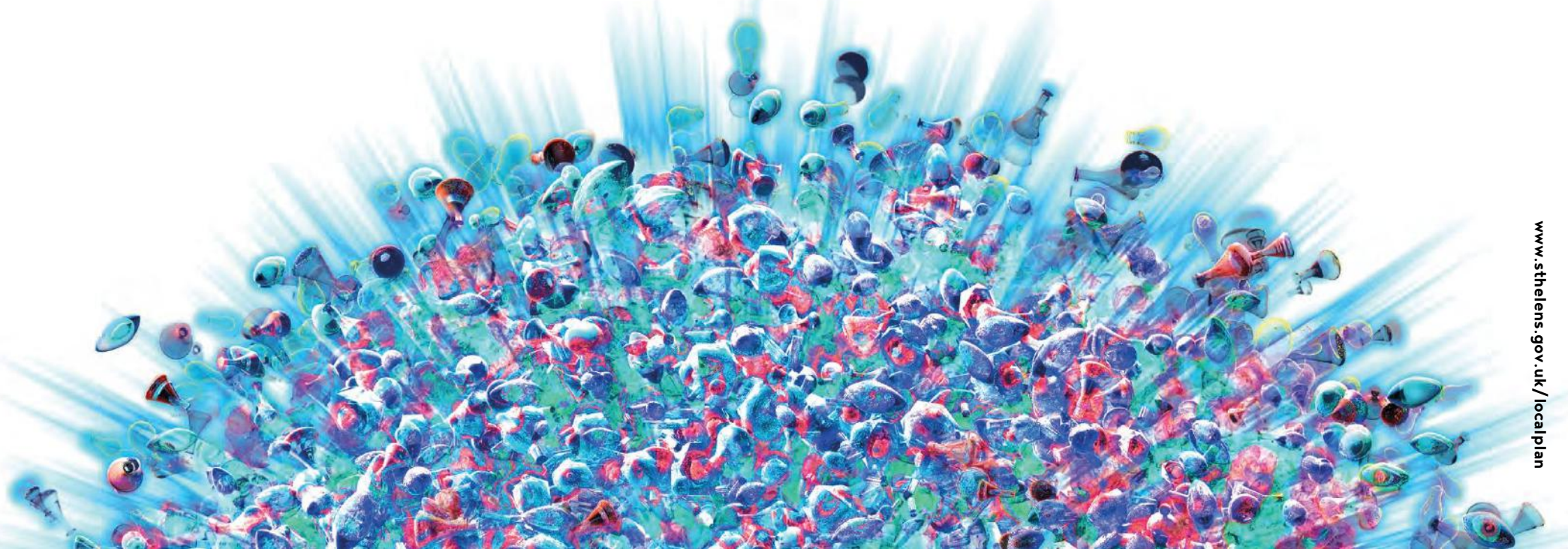


St.Helens Council

ST HELENS BOROUGH LOCAL PLAN 2020 - 2035

SUBMISSION DRAFT POLICIES MAP  
JANUARY 2019

# A BALANCED PLAN FOR A BETTER FUTURE





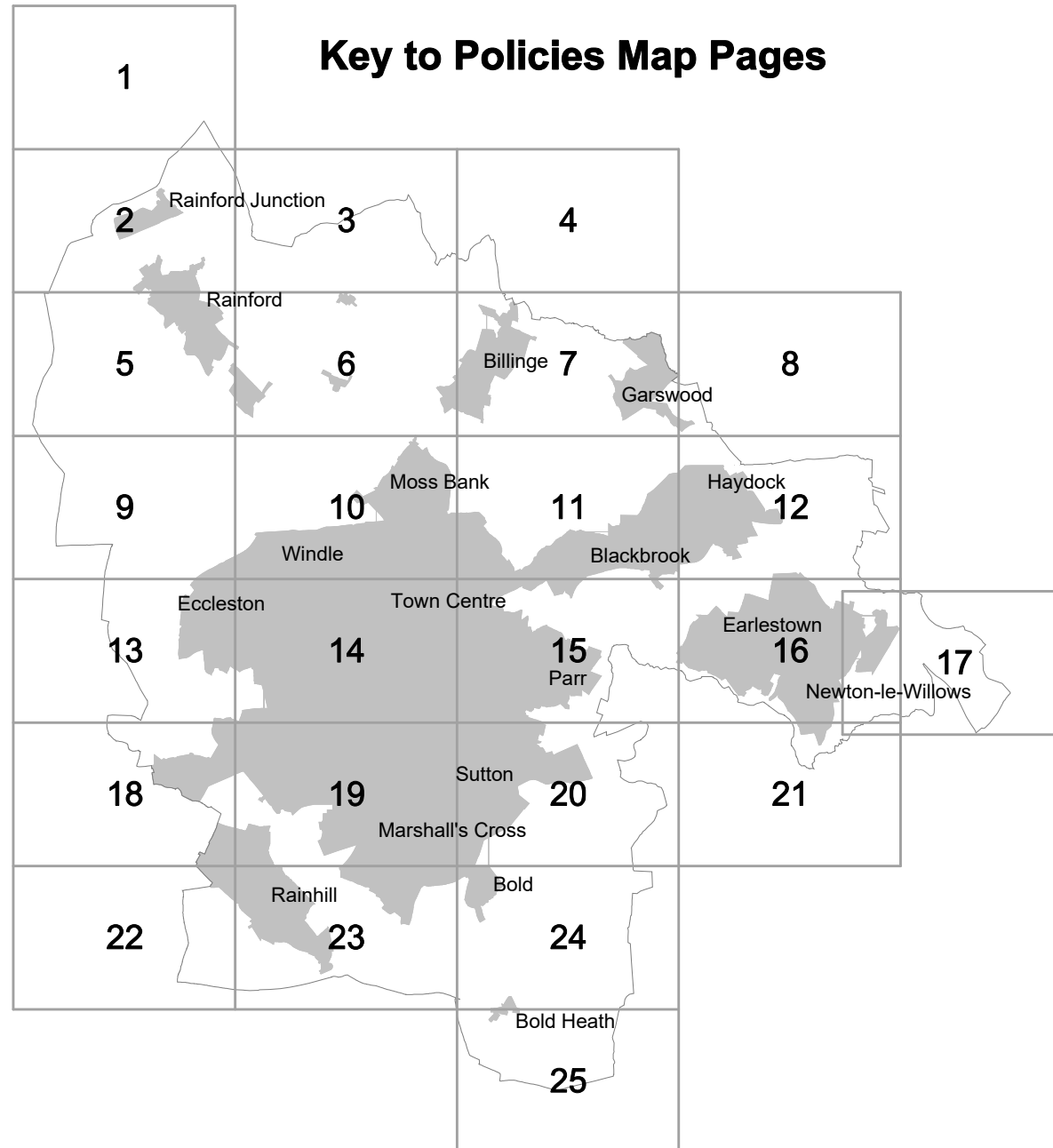
## **St.Helens Borough Local Plan 2020-2035 Proposed Submission Draft Policies Map**

This Map shows the spatial (geographic) areas where area-specific policies of the “St.Helens Borough Local Plan 2020-2035” apply. The other policies in the St.Helens Borough Local Plan 2020-2035 apply across the entire Borough.

It is proposed that, when the St.Helens Borough Local Plan is adopted, the content of this map will be added to the adopted St.Helens Policies Map (SHPM). The SHPM identifies spatial (geographic) areas where area-specific policies, from all adopted Local Plans for all or parts of the Borough of St.Helens, apply. It is updated each time a Local Plan policy affecting a certain spatial area is adopted or deleted.

It is proposed that - in addition to information set out in this map - the adopted SHPM will show designations and allocations arising from policies in: the Bold Forest Park Area Action Plan (AAP) adopted in 2017; and the Merseyside and Halton Joint Waste Local Plan adopted in 2013. Information on the adopted SHPM drawn from the St.Helens Unitary Development Plan (1998) and the St.Helens Core Strategy (2012) will be removed from the SHPM when the St.Helens Borough Local Plan is adopted.

## Key to Policies Map Pages





## Legend

	Boundary of St.Helens MBC	
	Housing Allocation (urban area)	LPA05
	Employment Allocation (urban area)	LPA04
	Allocated Housing (removed from Green Belt)	LPA05
	Bold Forest Garden Suburb (removed from Green Belt)	LPA05
	Employment Allocation (removed from Green Belt)	LPA04
	Safeguarded Housing Land (removed from Green Belt)	LPA06
	Safeguarded Employment Land (removed from Green Belt)	LPA06
	Parkside East (removed from Green Belt)	LPA10
	Gypsy & Traveller Permanent Provision	LPC03
	Gypsy & Traveller Transit Site	LPC03
	District / Local Centre	LPC04
1. Billinge, 2. Chain Lane, 3. Clipsley Lane, 4. Dentons Green, 5. Eccleston, 6. Fingerpost, 7. Newton-le-Willows, 8. Newtown, 9. Rainford, 10. Sutton, 11. Marshalls Cross, 12. Rainhill, 13. Thatto Heath		
	Central Spatial Area	LBP01, LPC04
	Town Centre Boundary	LPB01, LPC04
	Primary Shopping Area	LPB01, LPB02, LPB04
	Primary Retail Frontage	LPB01, LPC04
	Secondary Retail Frontage	LPB01, LPC04
	Area of Opportunity	LPB01
	Oil & Gas Authority Licence Area *	LPC14 (see appendix 12)
	Mineral Safeguarding Area	LPC14 (see appendix 12)

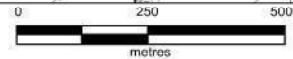
## Main Policies

## Main Policies

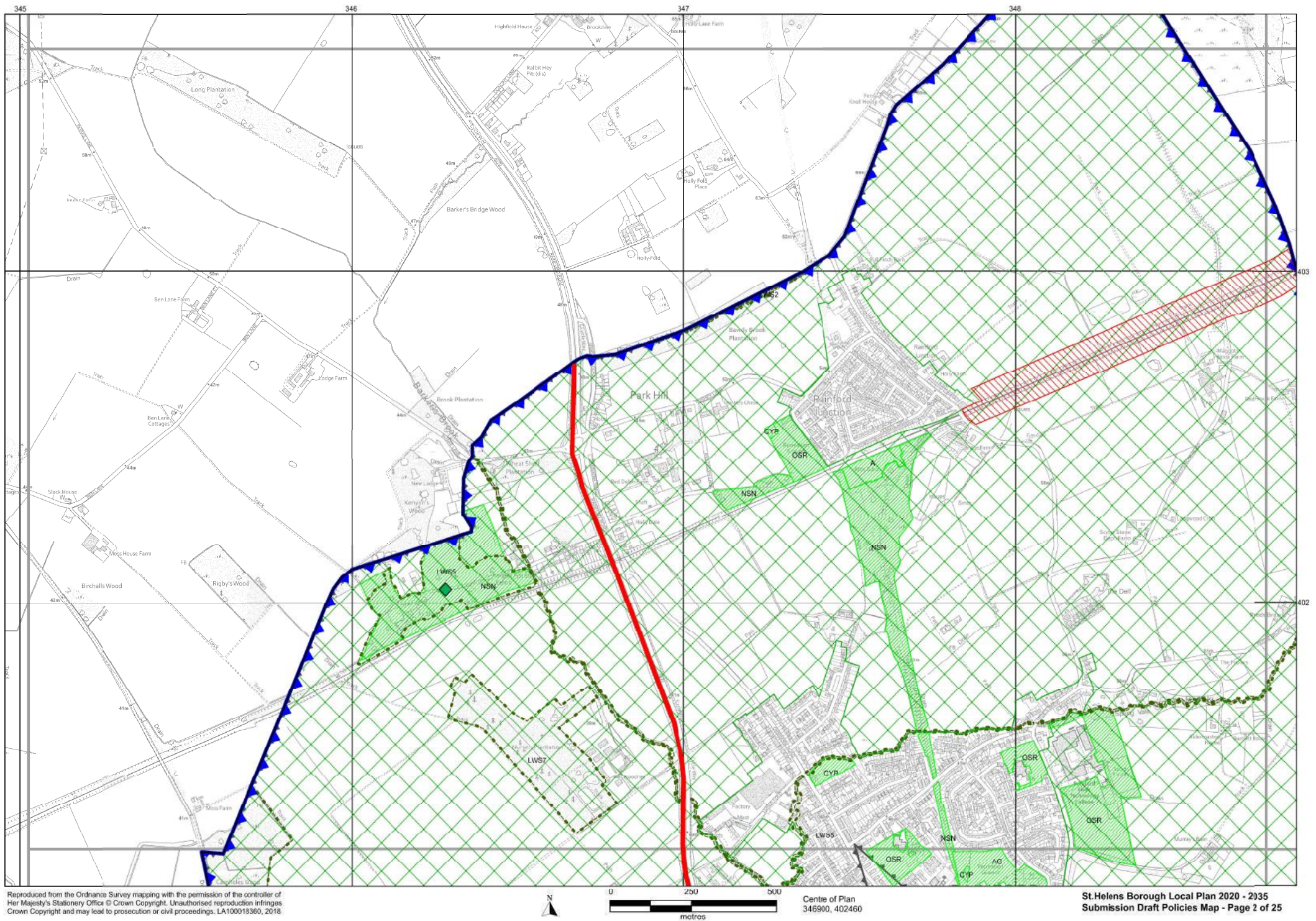
	Park & Ride Location	LPA07
	Central / Junction Rail Link	LPA07
	Proposed Rail Station	LPA07
	Proposed Rail Extension	LPA07
	Strategic Road Network	LPA07
	Key Route Network (non-freight)	LPA07
	Key Route network (including freight)	LPA07
	Freight Network (non-key)	LPA07
	Potential Junction Improvement (being investigated - extent to be confirmed)	LPA07
	Slow Filter Zone	LPC12
	Urban Intervention Zone	LPC12
	Floodwater Storage Safeguarding Area	LPC12
	Green Belt	LPA02, LPA06
	Scheduled Monument *	LPC12
	Registered Park *	LPC11
	Conservation Area *	LPC11
	Nature Improvement Area	LPC06, LPC08
	Greenway Network	LPC07
	Local Wildlife Site	LPC06
	Local Nature Reserve *	LPC06
	Open Space and Outdoor Sports & Recreation Facilities	LPC05

Parks and Gardens (PG), Natural and Semi-Natural Greenspaces (NSN), Amenity Greenspace (AG), Provision for Children and Young People (including Equipped Play Areas) (CYP), Allotments (A), Cemeteries and Churchyards (C), Outdoor Sports and Recreation Facilities (including Playing Fields, Golf Courses, Bowling Greens, Tennis Courts and Sailing Spaces) (OSR)

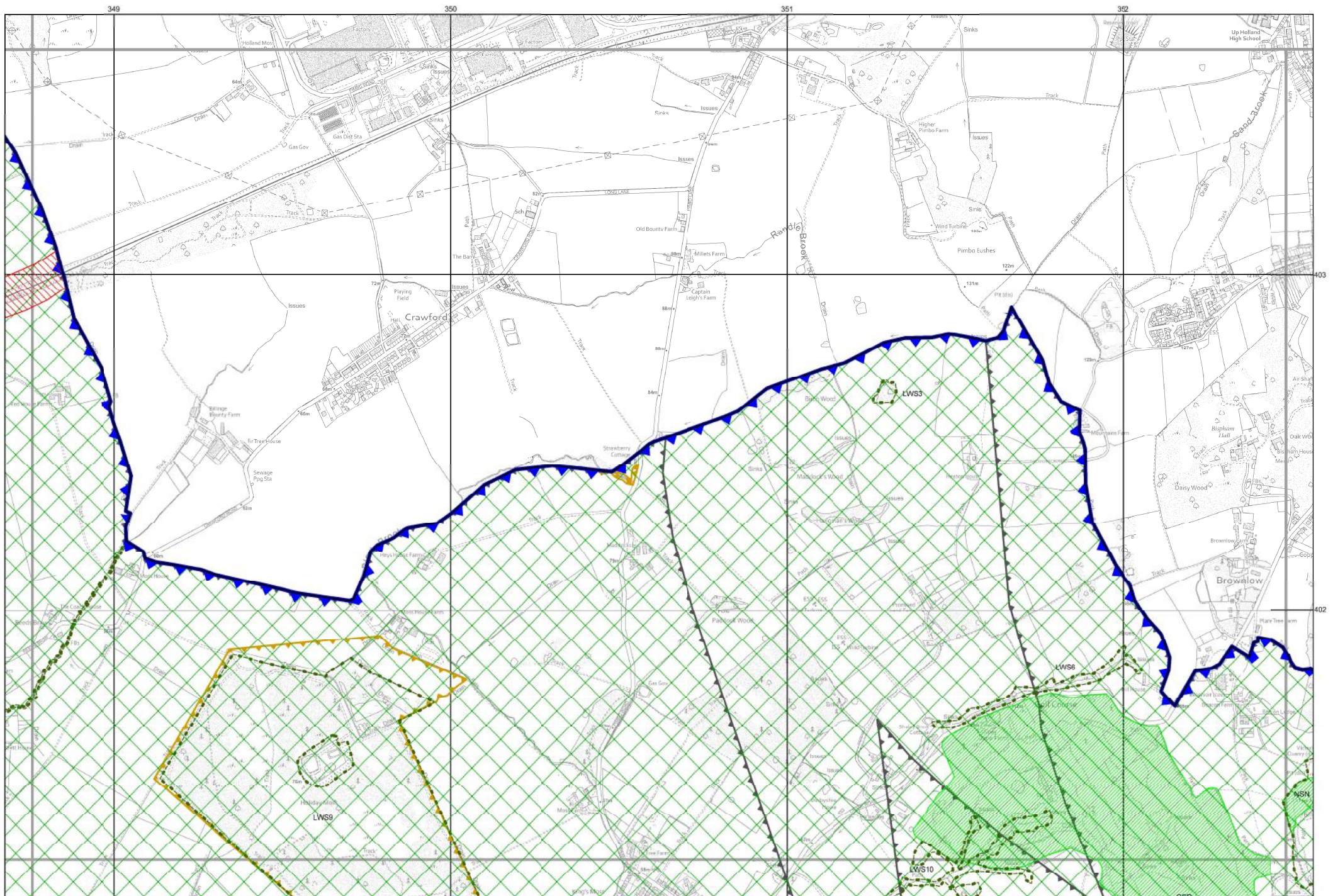
\* for information only, may change as updated outside of the Local Plan process





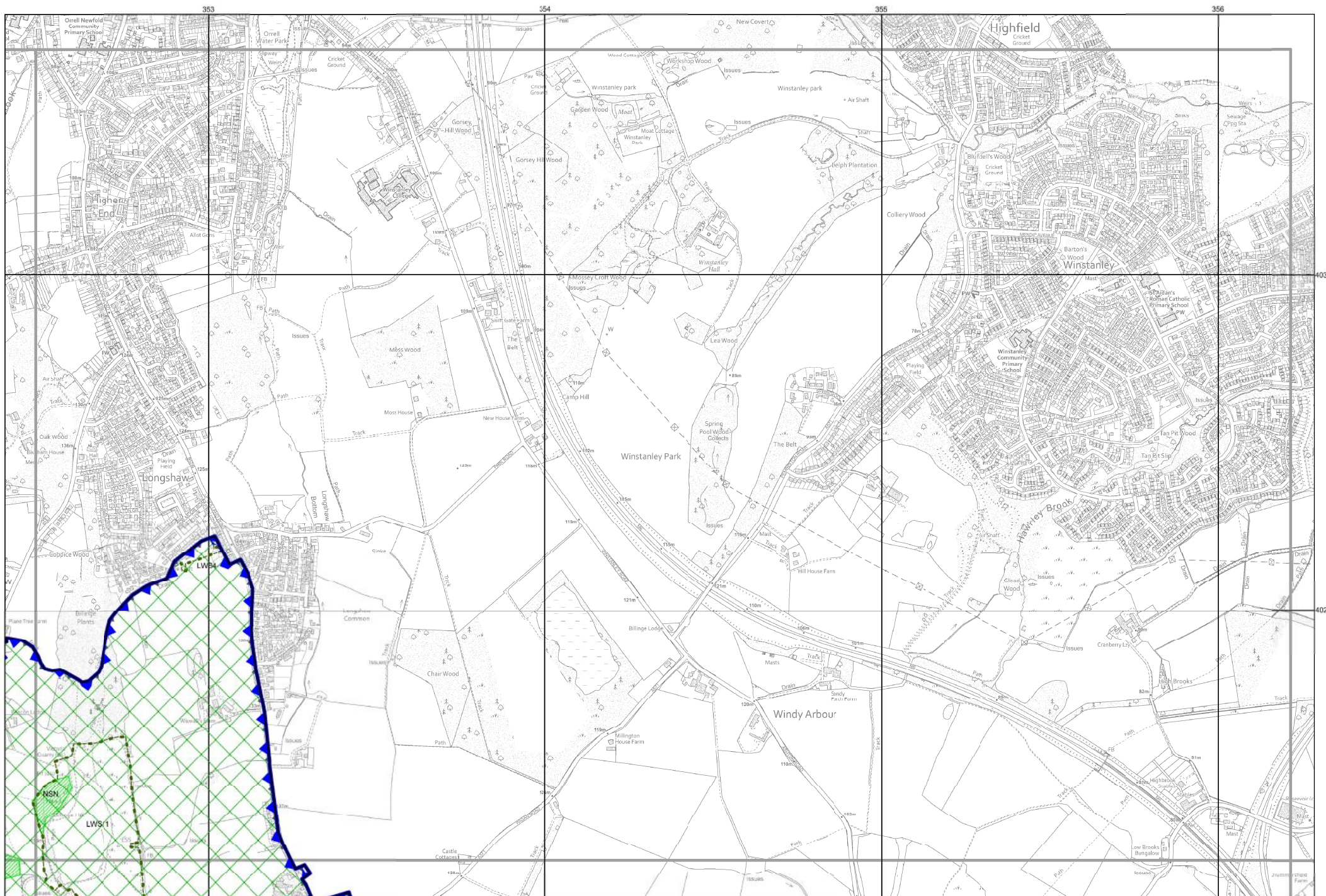




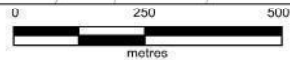


Centre of Plan  
350620, 402460





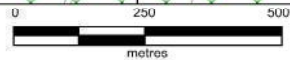
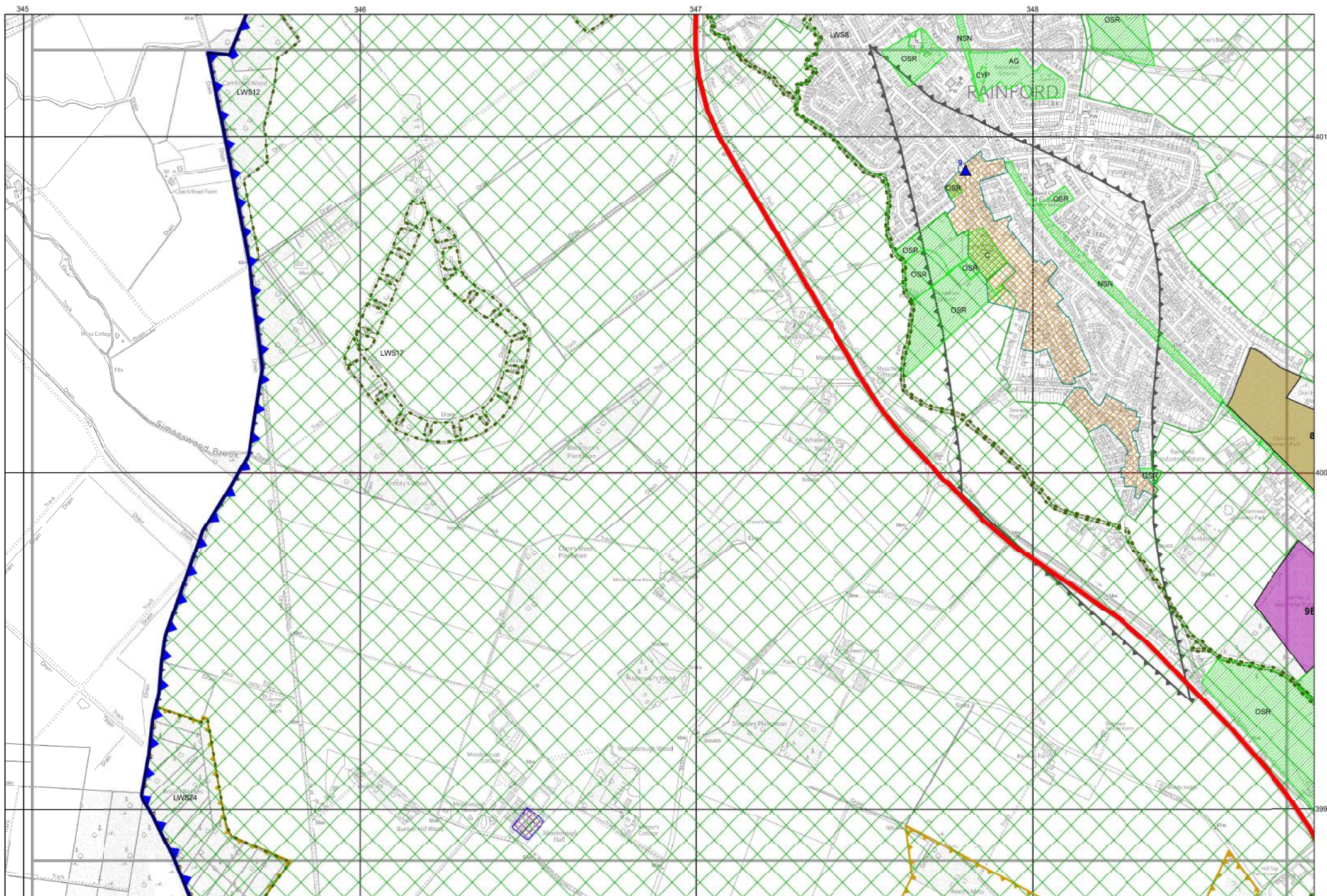
Reproduced from the Ordnance Survey mapping with the permission of the controller of Her Majesty's Stationery Office © Crown Copyright. Unauthorised reproduction infringes Crown Copyright and may lead to prosecution or civil proceedings. LA100013360, 2018



Centre of Plan  
354340, 402460

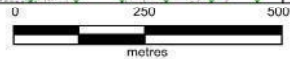
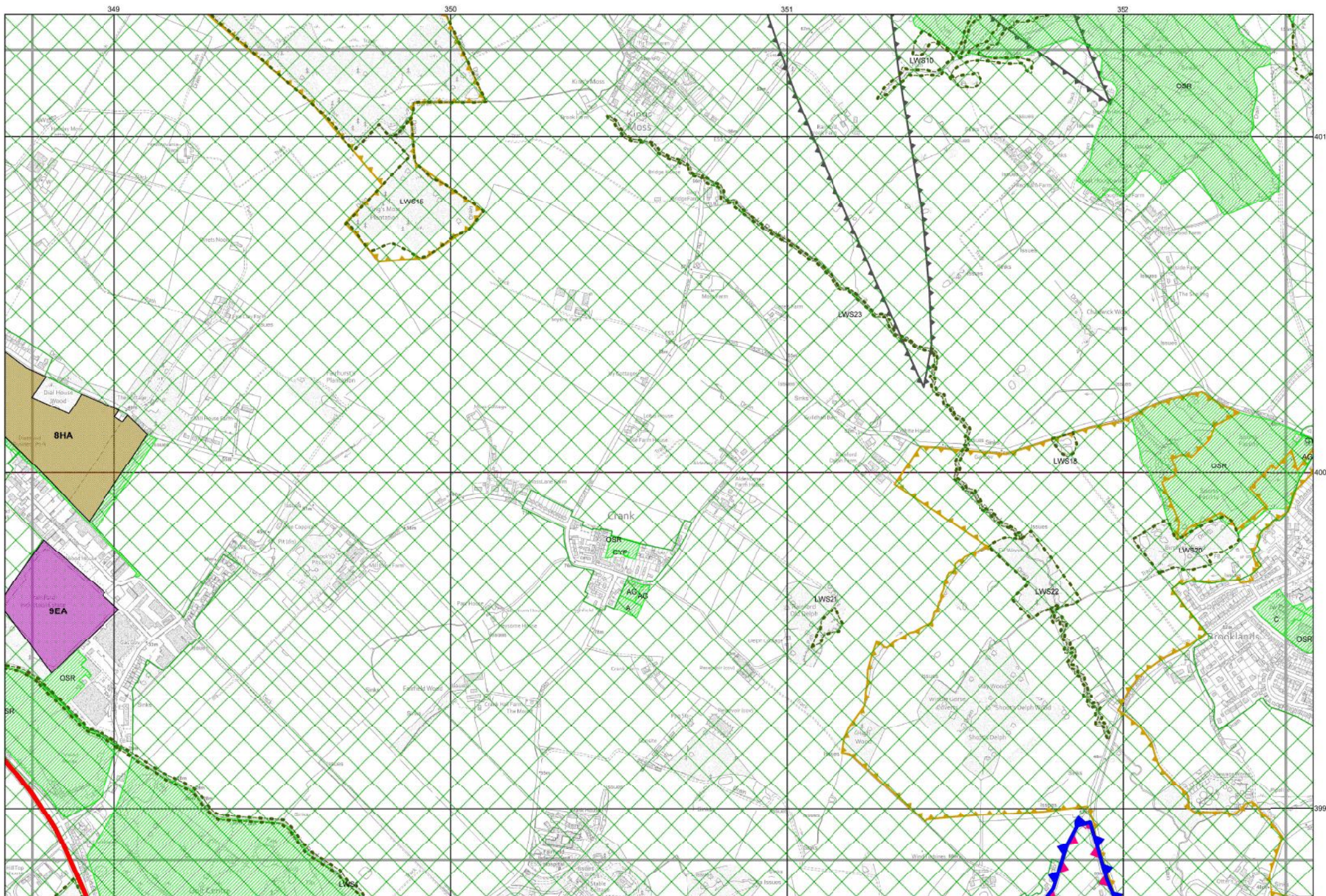
**St. Helens Borough Local Plan 2020 - 2035**  
**Submission Draft Policies Map - Page 4 of 25**





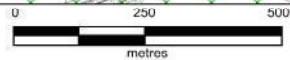
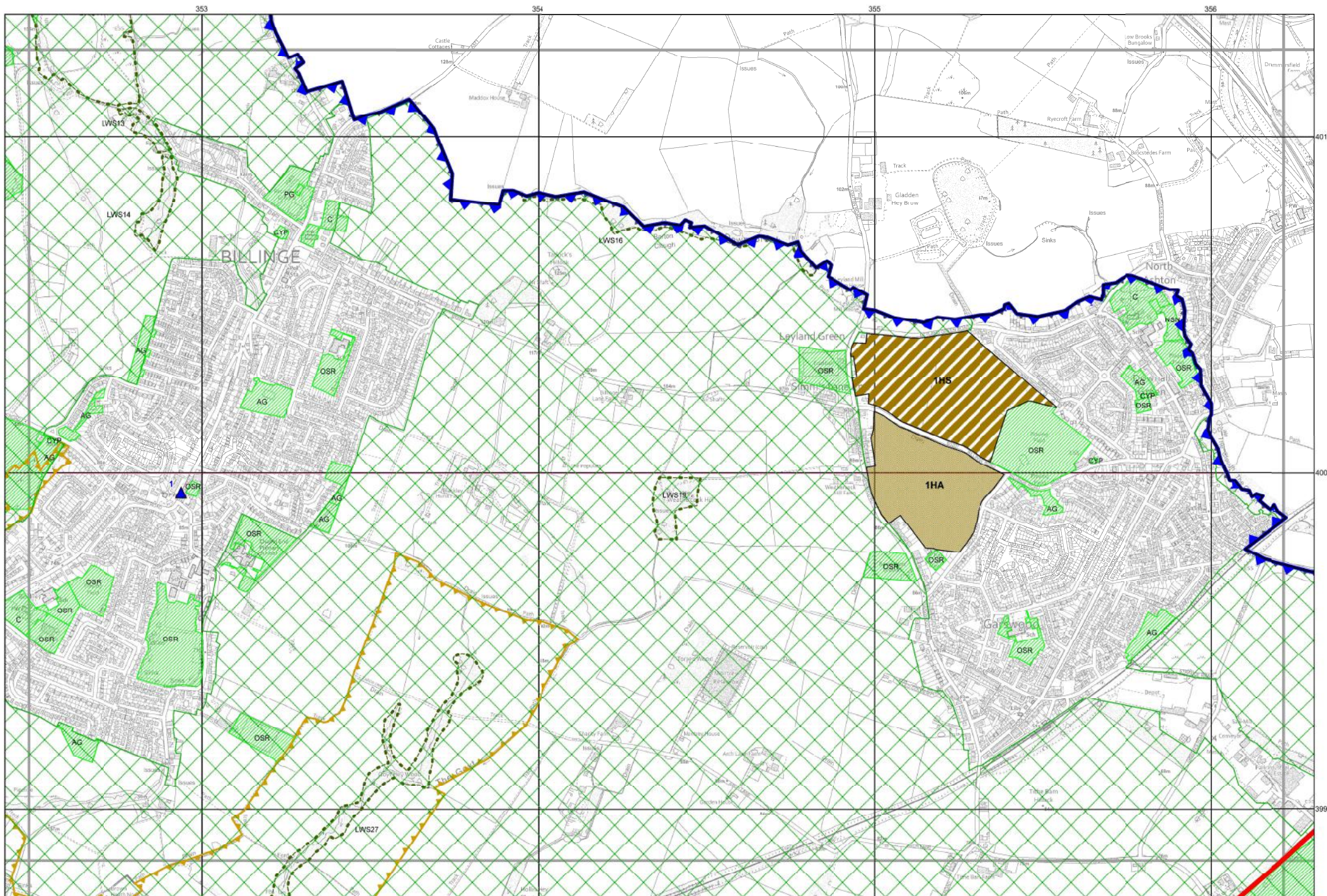
Centre of Plan  
346890, 400050





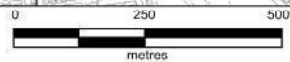
Centre of Plan  
350620, 400050



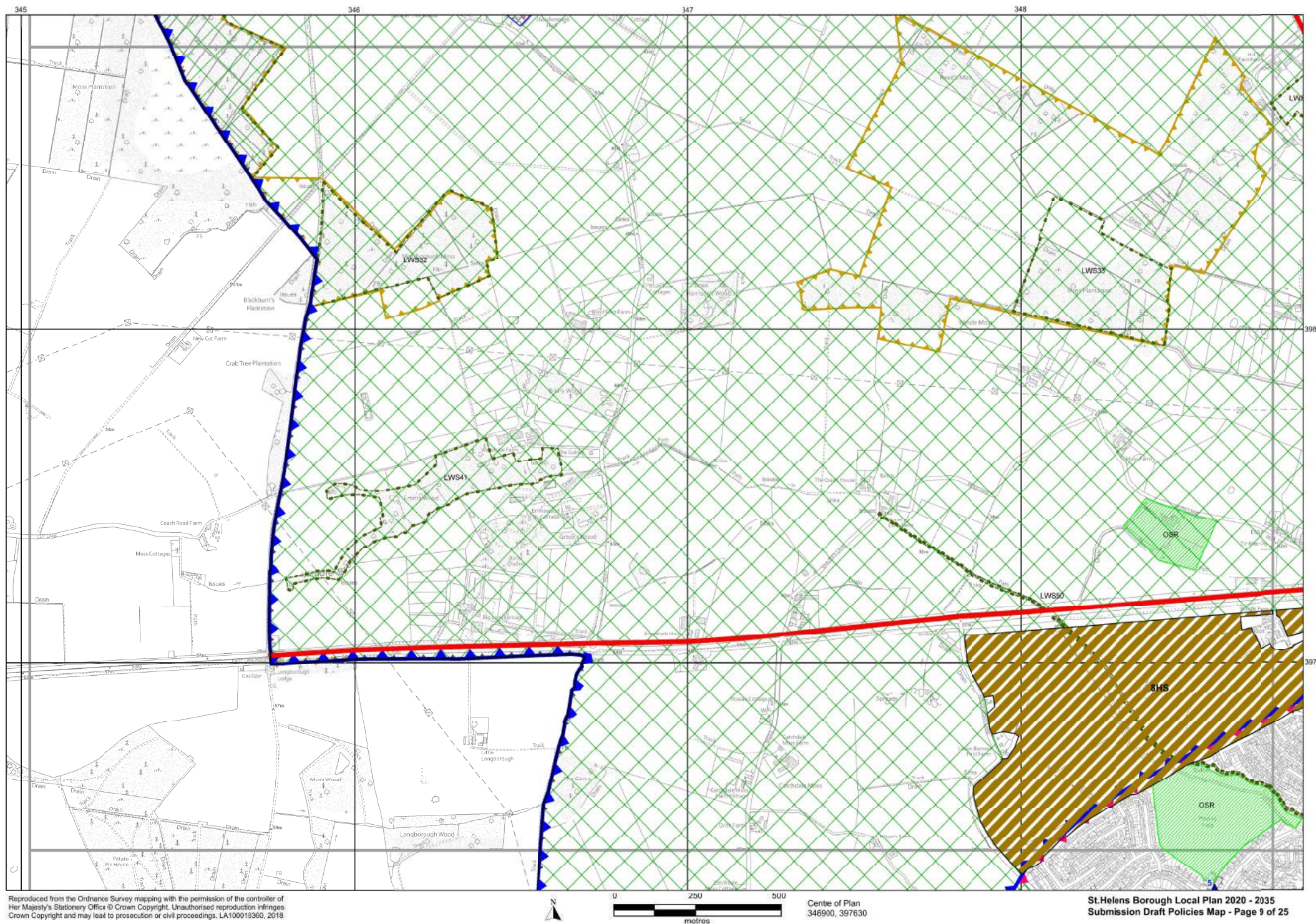


Centre of Plan  
354360, 400050

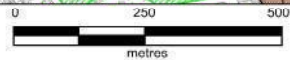
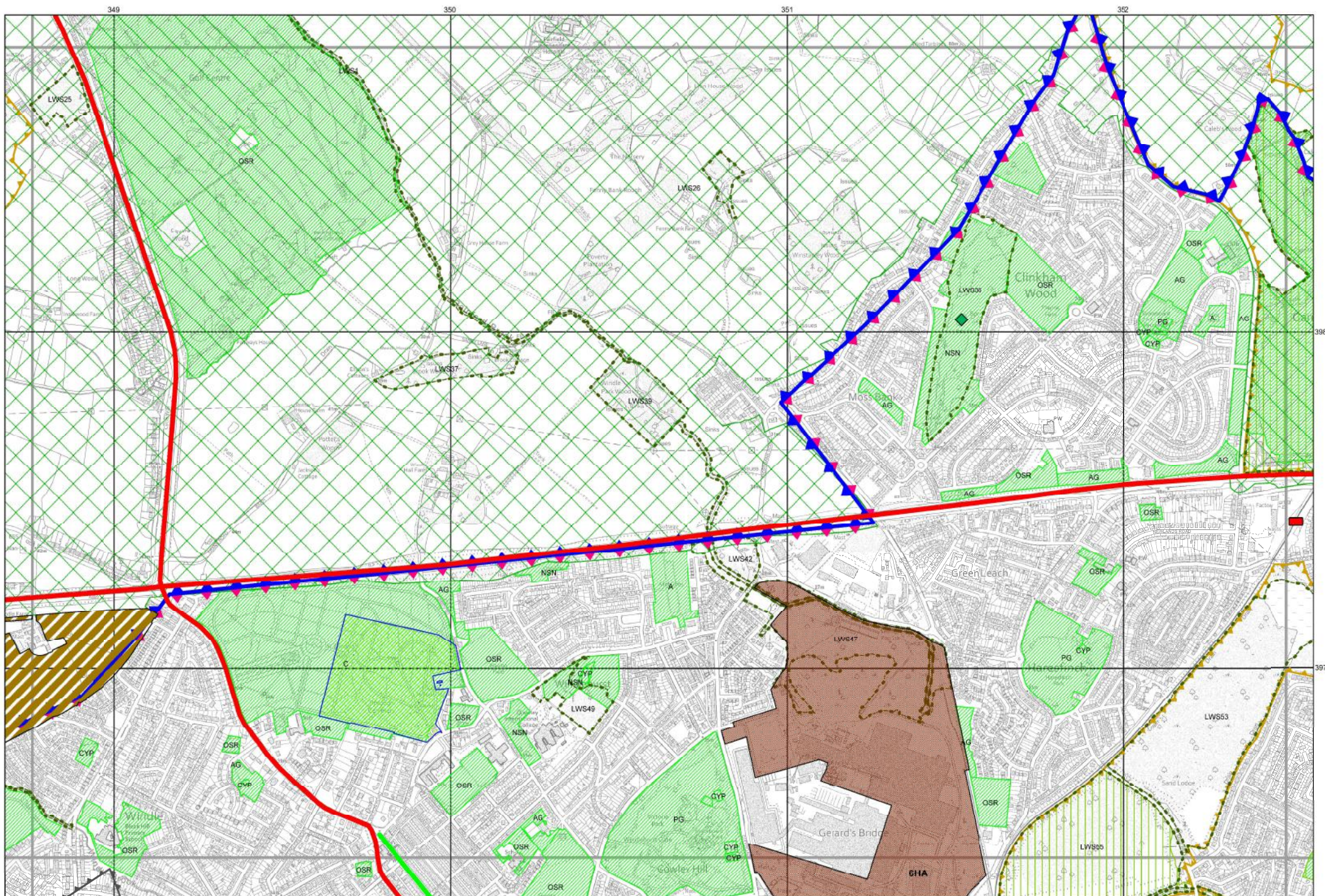






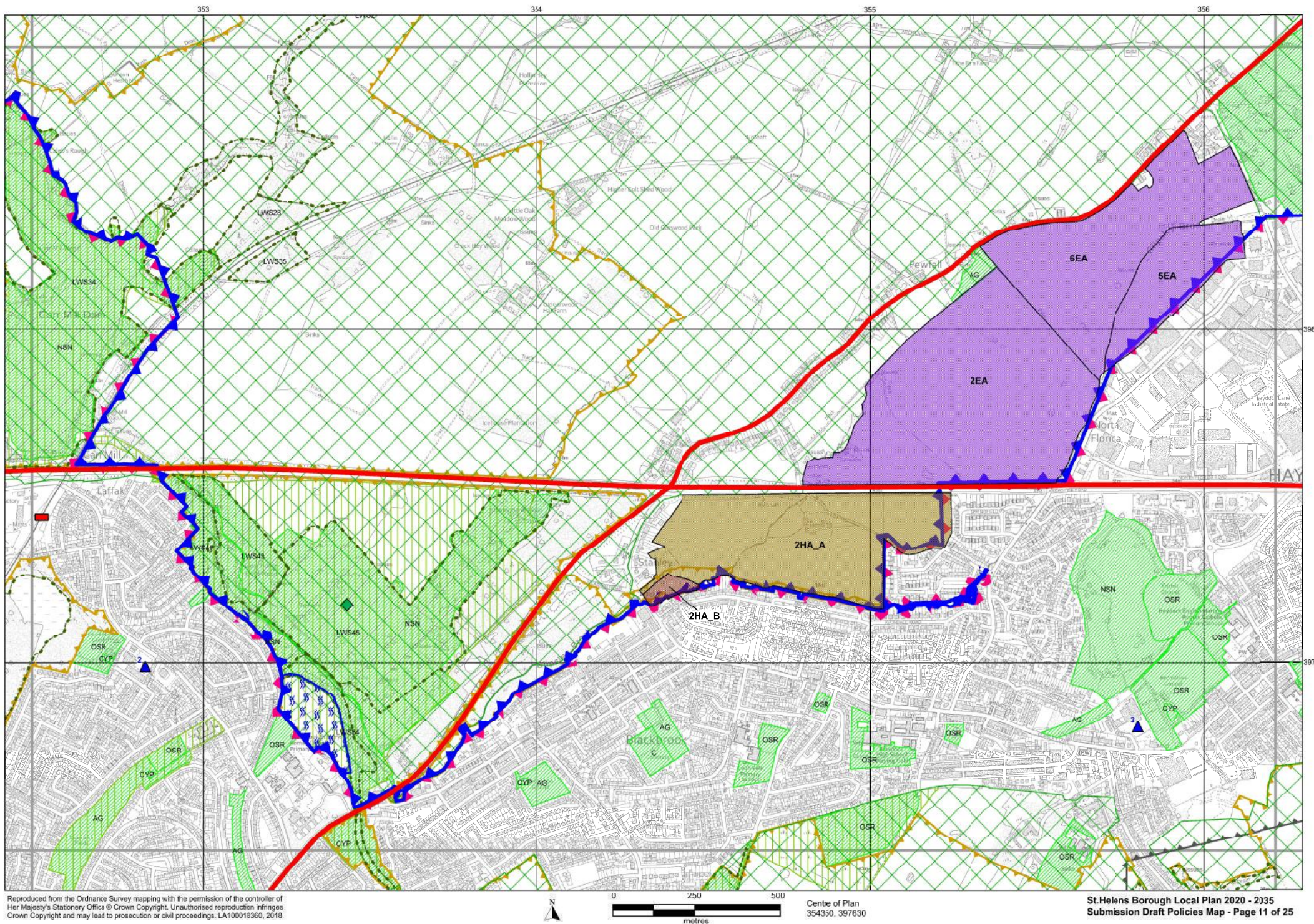




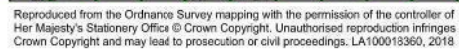


Centre of Plan  
350620, 397630





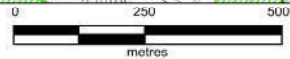
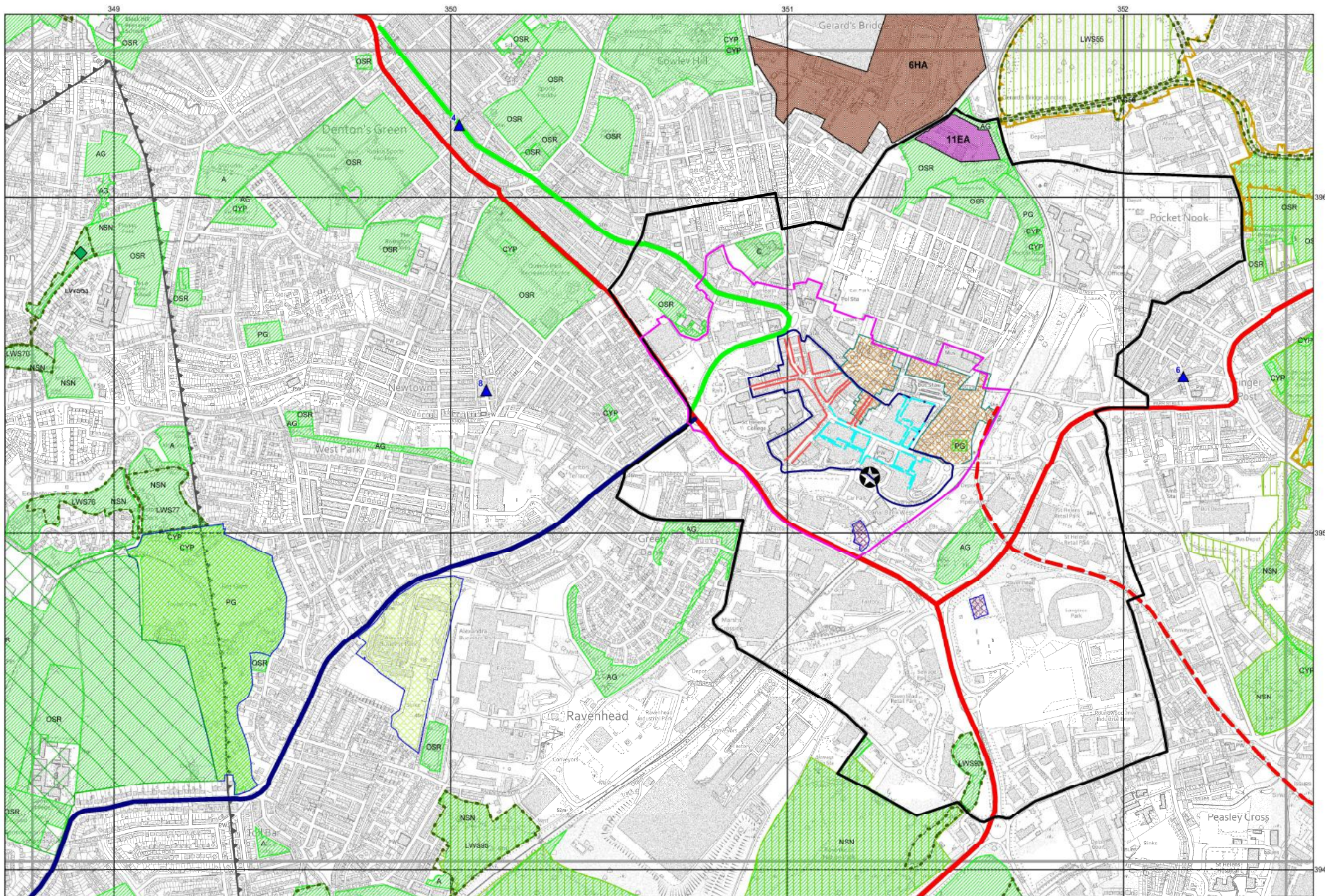






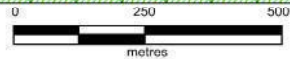
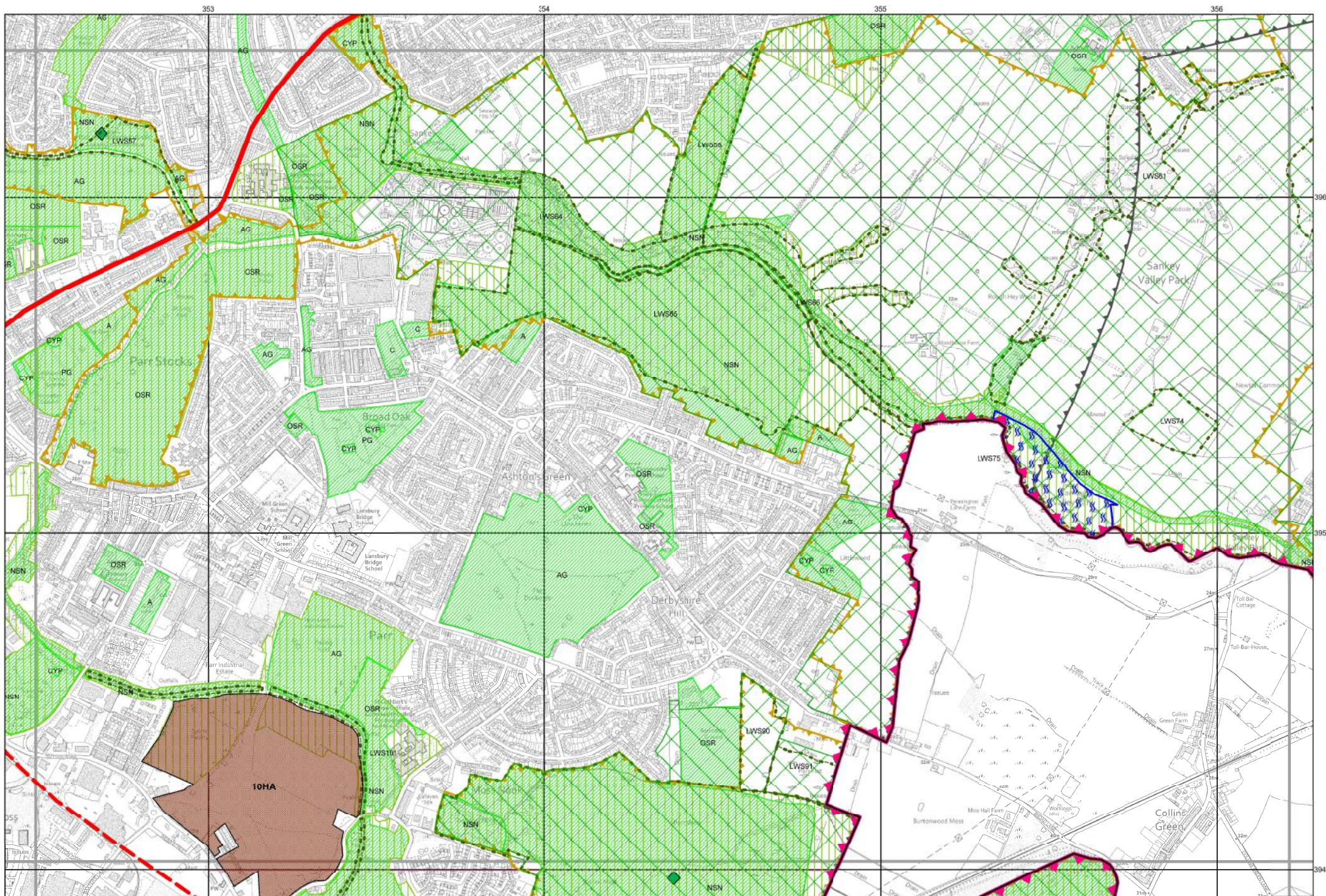






Centre of Plan  
350620, 395230



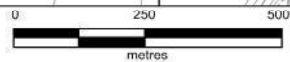
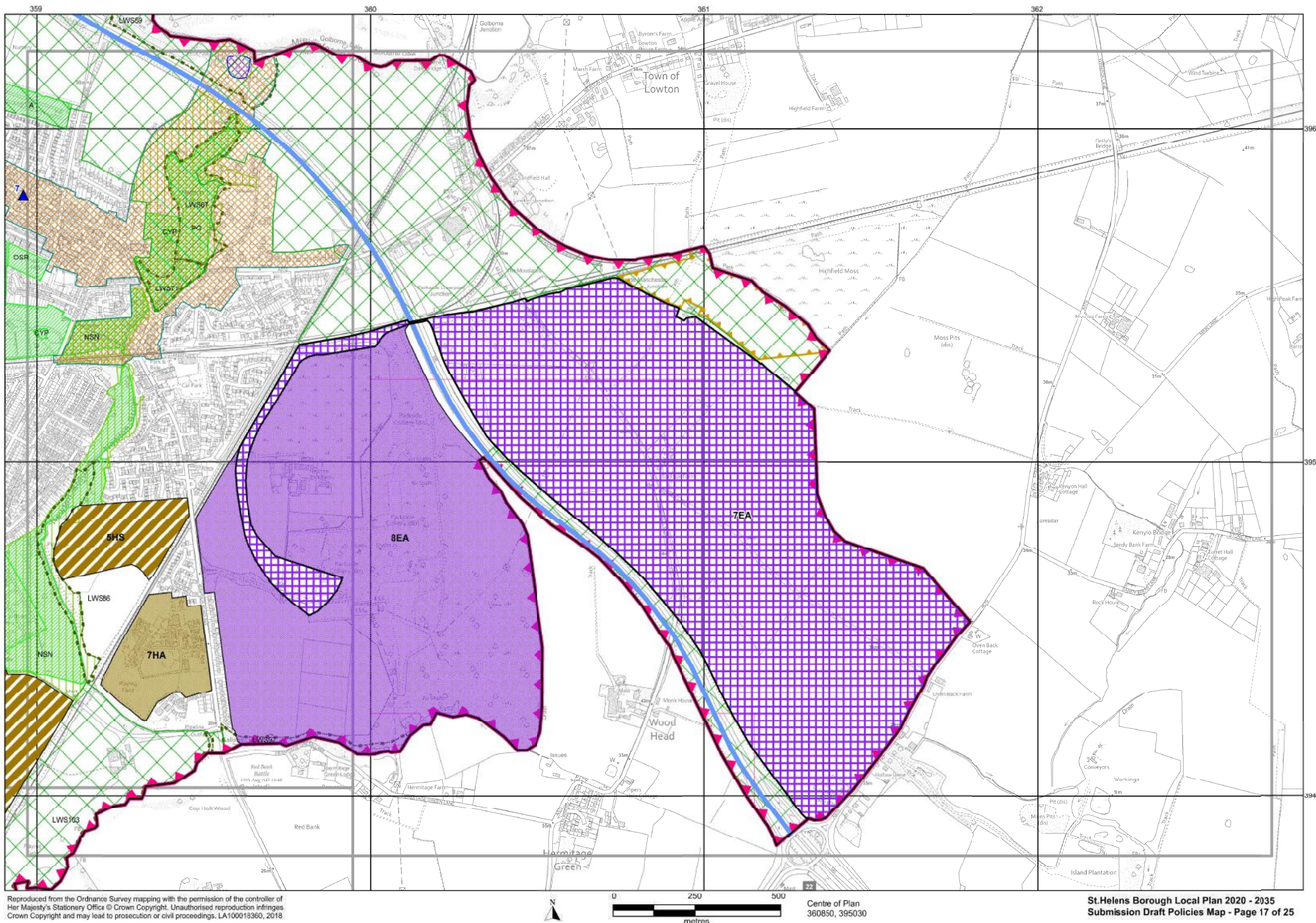


Centre of Plan  
354340, 395230



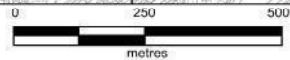
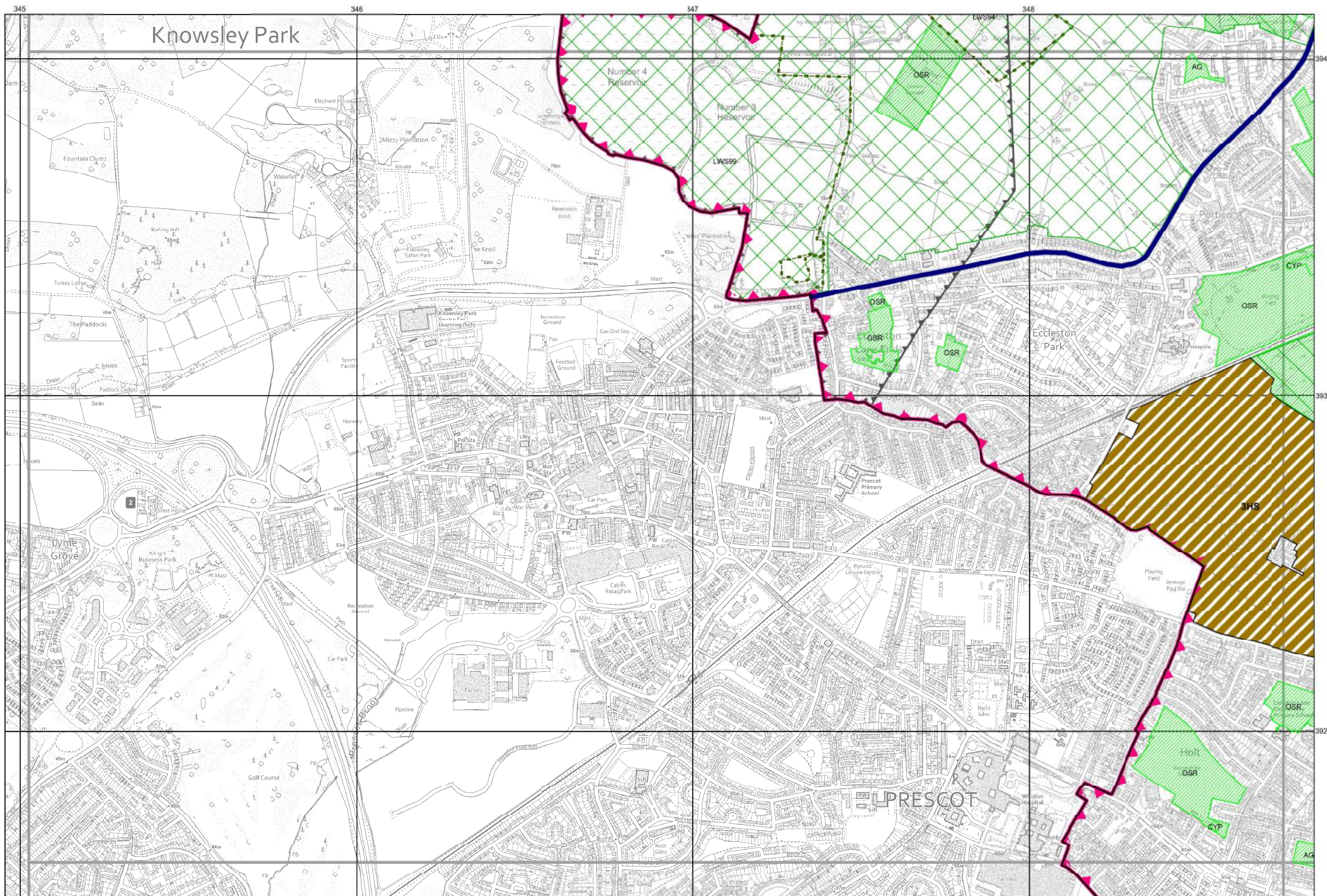






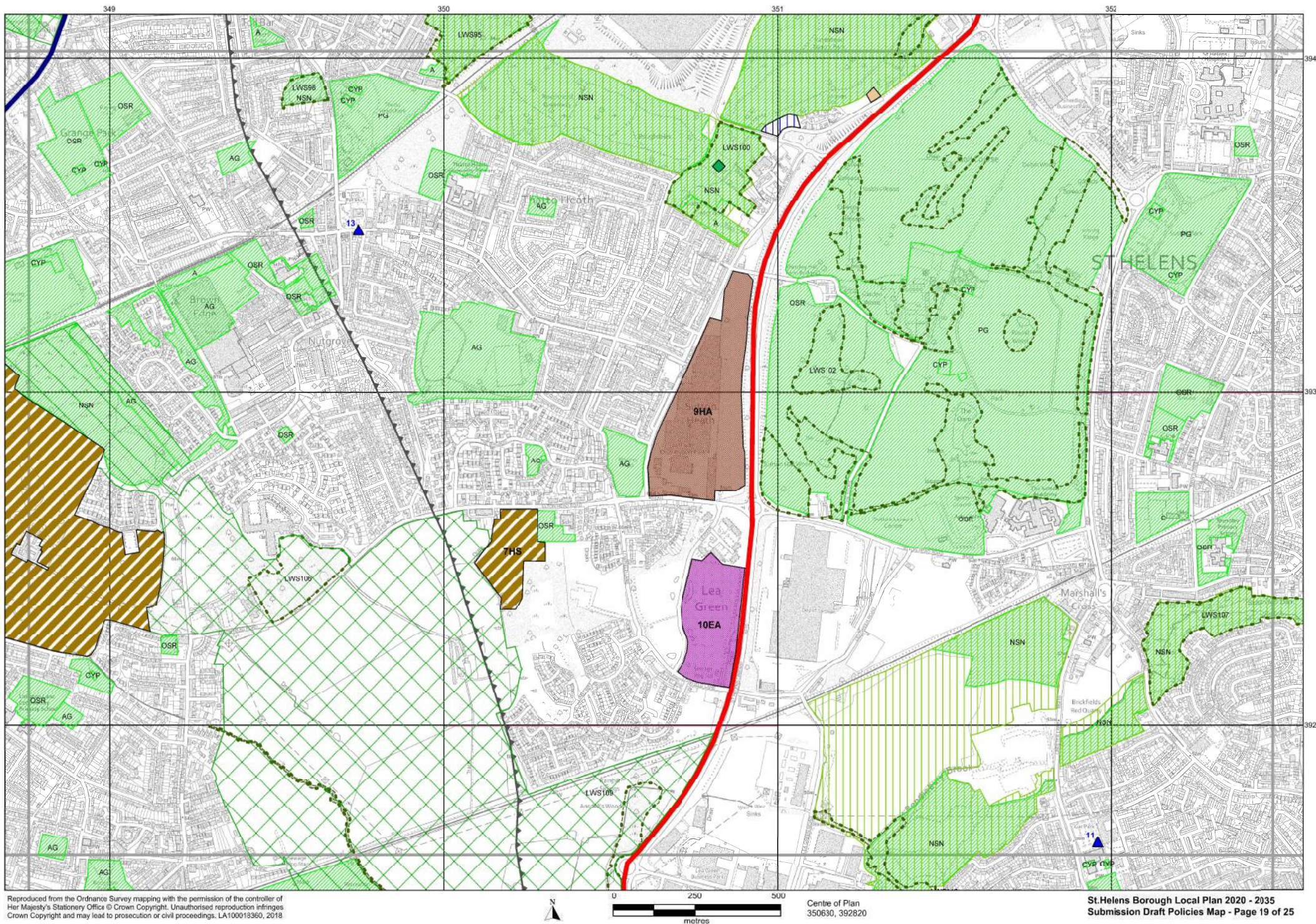
Centre of Plan  
360850, 395030



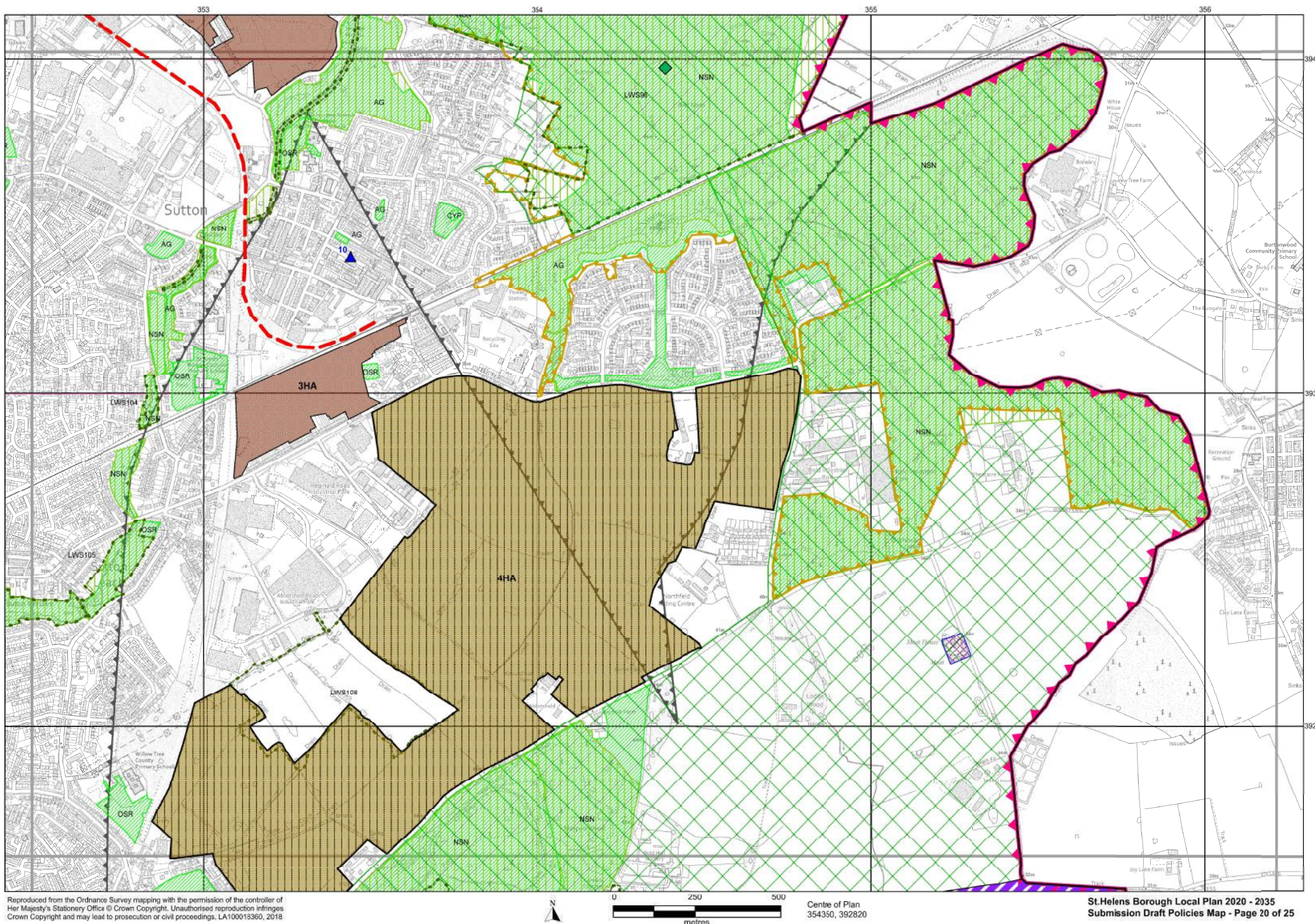


Centre of Plan  
346900, 392820

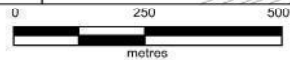
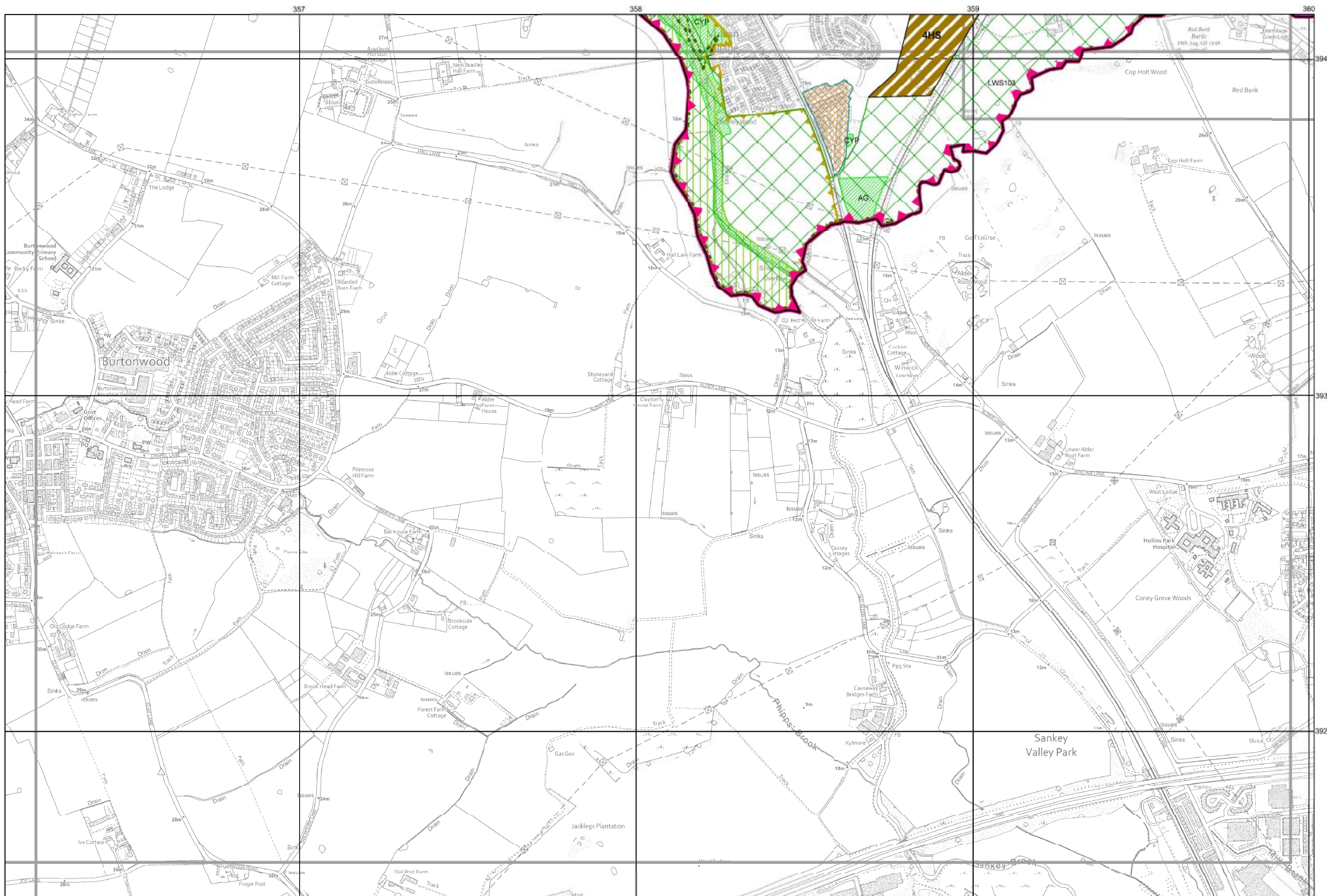






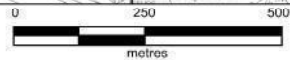
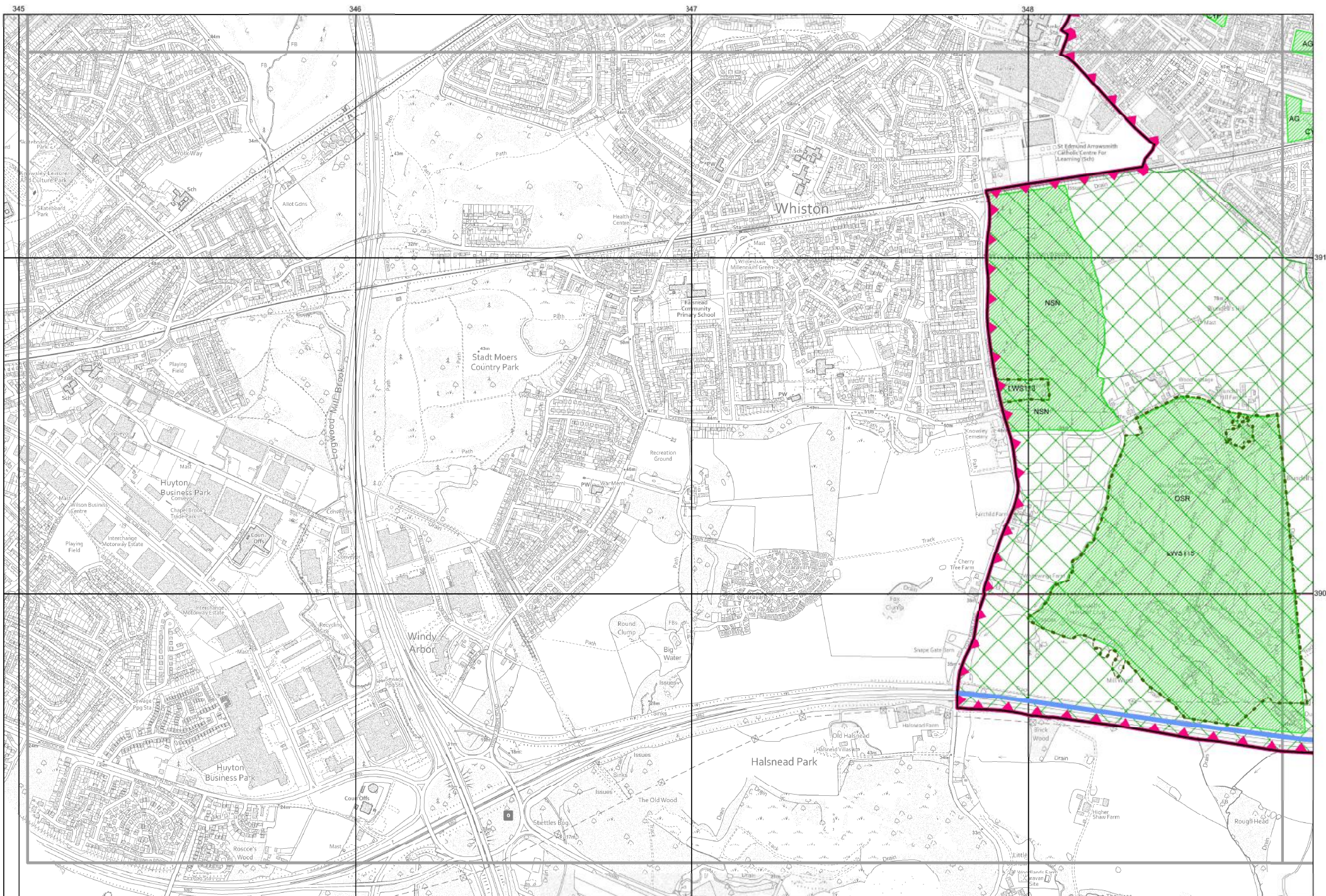






Centre of Plan  
358070, 392820

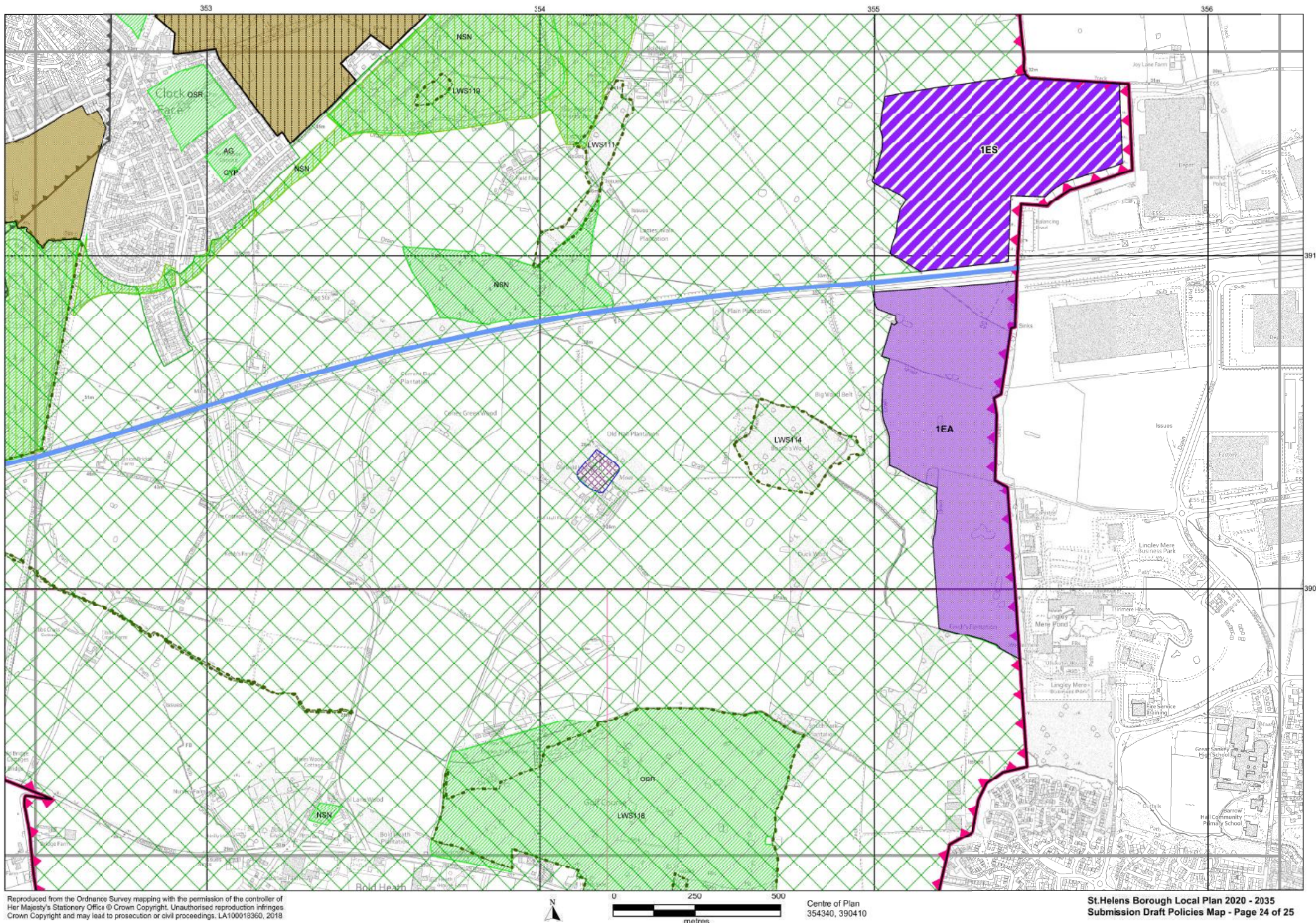




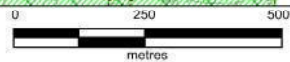






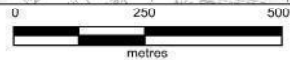
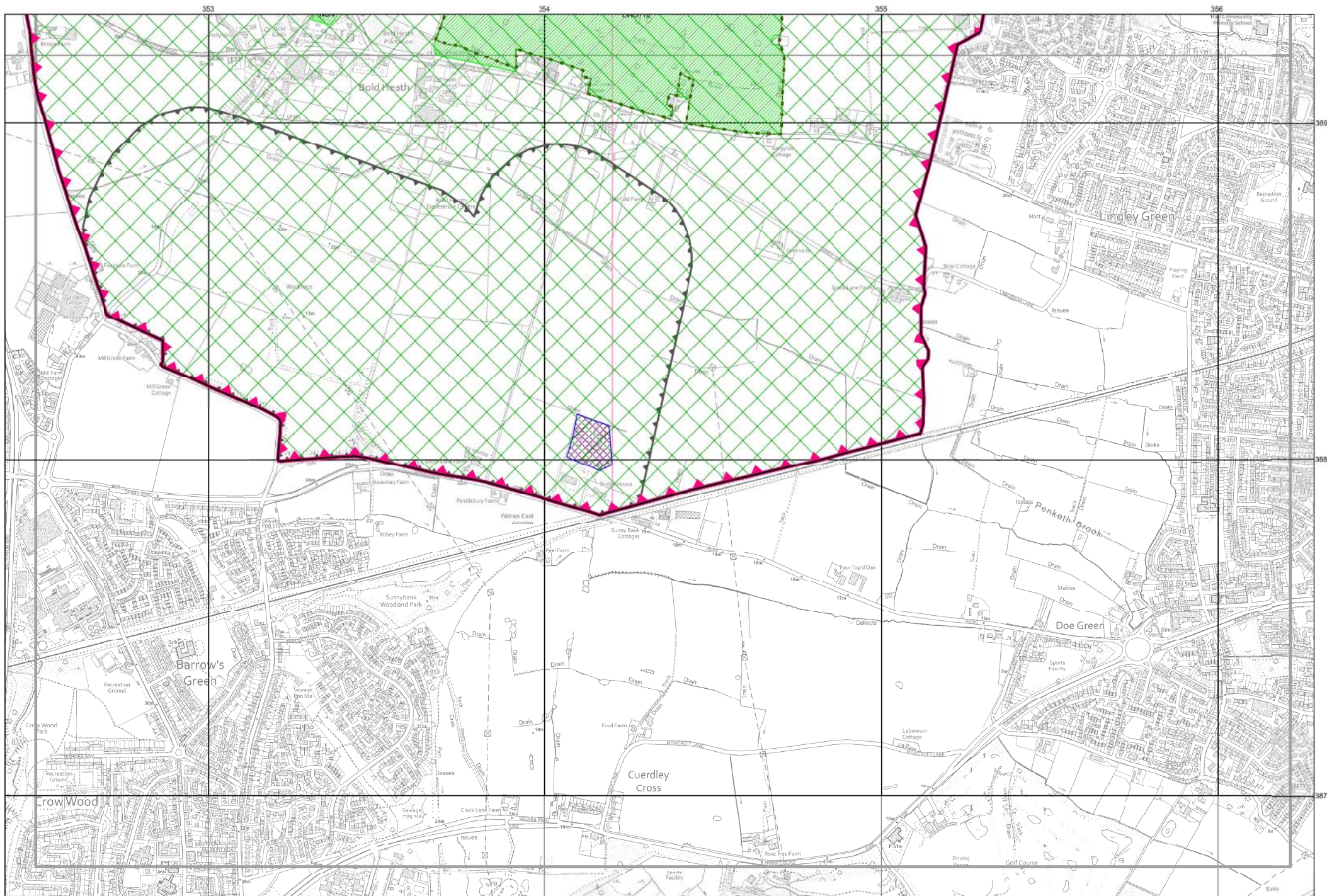


Reproduced from the Ordnance Survey mapping with the permission of the controller of Her Majesty's Stationery Office © Crown Copyright. Unauthorised reproduction infringes Crown Copyright and may lead to prosecution or civil proceedings. LA100013360, 2018



Centre of Plan  
354340, 390410





Centre of Plan  
354340, 388010